

For Research Use Only

CXCL16 Polyclonal antibody

Catalog Number: 29589-1-AP



Basic Information

Catalog Number:

29589-1-AP

Size:

150ul , Concentration: 800 ug/ml by Nanodrop;

Source:

Rabbit

Isotype:

IgG

Immunogen Catalog Number:

AG30981

GenBank Accession Number:

BC017588

GeneID (NCBI):

58191

UNIPROT ID:

Q9H2A7

Full Name:

chemokine (C-X-C motif) ligand 16

Calculated MW:

273 aa, 30 kDa

Observed MW:

28 kDa , 50-55 kDa

Purification Method:

Antigen affinity purification

Recommended Dilutions:

WB 1:500-1:2000

Applications

Tested Applications:

WB, ELISA

Species Specificity:

Human

Positive Controls:

WB : HeLa cells, HepG2 cells, SH-SY5Y cells

Background Information

CXCL16 was discovered as a ligand for CXC chemokine receptor (CXCR) 6. CXCL16 is a membrane-bound chemokine that consists of four distinct domains: the chemokine domain, mucin-like domain, transmembrane domain and ad cytoplasmic. After cleavage, soluble CXCL16 acts as a chemoattractant for activated CD8 T cells, NKT cells and Th1-polarized T cells that express CXCR6. CXCL16 expression has been studied mainly in macrophages and dendritic cells. CXCL16 production by non-immune cells remains controversial. CXCL16 was expressed as two different forms: a 50 kDa form and a 28 kDa form, and the 50 kDa may be the glycosylated form (PMID: 17855433, 33552057). (PMID: 17855433, 33552057).

Storage

Storage:

Store at -20°C. Stable for one year after shipment.

Storage Buffer:

PBS with 0.02% sodium azide and 50% glycerol pH 7.3.

Aliquoting is unnecessary for -20°C storage

*** 20ul sizes contain 0.1% BSA

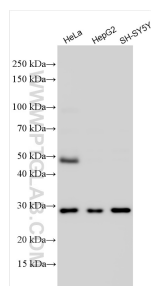
For technical support and original validation data for this product please contact:

T: 1 (888) 4PTGLAB (1-888-478-4522) (toll free in USA), or 1(312) 455-8498 (outside USA)

E: proteintech@ptglab.com
W: ptglab.com

This product is exclusively available under Proteintech Group brand and is not available to purchase from any other manufacturer.

Selected Validation Data



Various lysates were subjected to SDS PAGE followed by western blot with 29589-1-AP (CXCL16 antibody) at dilution of 1:1000 incubated at room temperature for 1.5 hours.