

For Research Use Only

RELB Polyclonal antibody

Catalog Number: 29601-1-AP



Basic Information

| | | |
|---|---|--|
| Catalog Number: 29601-1-AP | GenBank Accession Number: BC028013 | Purification Method: Antigen affinity purification |
| Size: 150ul , Concentration: 300 µg/ml by Nanodrop; | GeneID (NCBI): 5971 | Recommended Dilutions: WB 1:500-1:3000 |
| Source: Rabbit | Full Name: v-rel reticuloendotheliosis viral oncogene homolog B | |
| Isotype: IgG | Calculated MW: 62 kDa | |
| Immunogen Catalog Number: AG30334 | Observed MW: 62-65 kDa | |

Applications

| | |
|--|---|
| Tested Applications: WB, ELISA | Positive Controls: WB : Raji cells, Ramos cells |
| Species Specificity: Human | |

Background Information

RELB is one of the more unusual members of the NF-κB family, it is best known for its roles in lymphoid development, DC biology, and noncanonical signaling. RELB is capable of direct binding to the AhR that supports the xenobiotic-detoxifying pathway. RELB can regulate the circadian rhythm by directly binding to the BMAL partner of CLOCK.

Storage

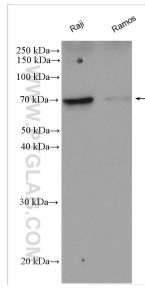
Storage:
Store at -20°C.
Storage Buffer:
PBS with 0.02% sodium azide and 50% glycerol pH 7.3.
Aliquoting is unnecessary for -20°C storage

*** 20ul sizes contain 0.1% BSA

For technical support and original validation data for this product please contact:
T: 1 (888) 4PTGLAB (1-888-478-4522) (toll free in USA), or 1(312) 455-8498 (outside USA) E: proteintech@ptglab.com W: ptglab.com

This product is exclusively available under Proteintech Group brand and is not available to purchase from any other manufacturer.

Selected Validation Data



Various lysates were subjected to SDS PAGE followed by western blot with 29601-1-AP (RELB antibody) at dilution of 1:1500 incubated at room temperature for 1.5 hours.