

For Research Use Only

RELB Polyclonal antibody, PBS Only

Catalog Number: 29601-1-PBS



Basic Information

Catalog Number:

29601-1-PBS

Size:

100ug, Concentration: 1 mg/ml by Nanodrop;

Source:

Rabbit

Isotype:

IgG

Immunogen Catalog Number:

AG30334

GenBank Accession Number:

BC028013

GeneID (NCBI):

5971

UNIPROT ID:

Q01201

Full Name:

v-rel reticuloendotheliosis viral oncogene homolog B

Calculated MW:

62 kDa

Observed MW:

62-65 kDa

Purification Method:

Antigen affinity purification

Applications

Tested Applications:

WB, IHC, IP, Indirect ELISA

Species Specificity:

human

Background Information

RELB is one of the more unusual members of the NF- κ B family, it is best known for its roles in lymphoid development, DC biology, and noncanonical signaling. RELB is capable of direct binding to the AhR that supports the xenobiotic-detoxifying pathway. RELB can regulate the circadian rhythm by directly binding to the BMAL partner of CLOCK.

Storage

Storage:

Store at -80°C.

Storage Buffer:

PBS Only

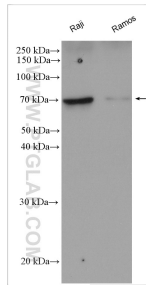
For technical support and original validation data for this product please contact:

T: 1 (888) 4PTGLAB (1-888-478-4522) (toll free in USA), or 1(312) 455-8498 (outside USA)

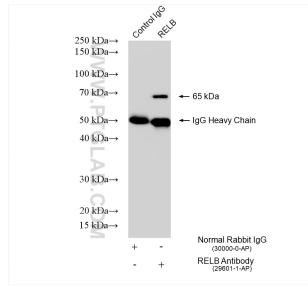
E: proteintech@ptglab.com
W: ptglab.com

This product is exclusively available under Proteintech Group brand and is not available to purchase from any other manufacturer.

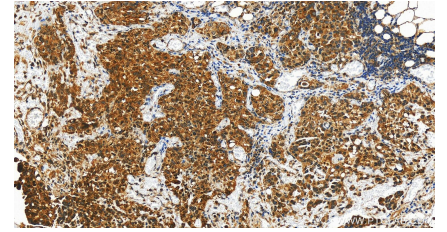
Selected Validation Data



Various lysates were subjected to SDS PAGE followed by western blot with 29601-1-AP (RELB antibody) at dilution of 1:1500 incubated at room temperature for 1.5 hours. This data was developed using the same antibody clone with 29601-1-PBS in a different storage buffer formulation.



IP result of anti-RELB (IP:29601-1-AP, 4ug; Detection:29601-1-AP 1:1000) with Raji cells lysate 2840 ug. This data was developed using the same antibody clone with 29601-1-PBS in a different storage buffer formulation.



Immunohistochemical analysis of paraffin-embedded human ovary cancer tissue slide using 29601-1-AP (RELB antibody) at dilution of 1:200 (under 20x lens). Heat mediated antigen retrieval with Tris-EDTA buffer (pH 9.0). This data was developed using the same antibody clone with 29601-1-PBS in a different storage buffer formulation.