

For Research Use Only

PPT1 Polyclonal antibody, PBS Only

Catalog Number: 29653-1-PBS

Featured Product



Basic Information

Catalog Number:

29653-1-PBS

Size:

100ug, Concentration: 1 mg/ml by Nanodrop;

Source:

Rabbit

Isotype:

IgG

Immunogen Catalog Number:

AG31240

GenBank Accession Number:

BC008426

GeneID (NCBI):

5538

UNIPROT ID:

P50897

Full Name:

palmitoyl-protein thioesterase 1

Calculated MW:

34 kDa

Observed MW:

32-34 kDa

Purification Method:

Antigen affinity purification

Applications

Tested Applications:

WB, IHC, IF-P, Indirect ELISA

Species Specificity:

human, mouse, rat

Background Information

The defective gene behind the INCL (infantile neuronal ceroid lipofuscinoses) disease, CLN1, encodes for palmitoyl protein thioesterase 1 (PPT1). It consists of 306 amino acids, including a signal sequence of 26 amino acids and three N-linked glycosylation sites. This protein exists with a molecular mass of 32 kDa, 34 kDa, 36 kDa, and 38 kDa. The enzyme is transported into lysosomes of non-neuronal cells by the mannose 6-phosphate receptor (M6PR) mediated pathway and a significant amount of native PPT1 resides in a complex rather than in a monomeric form (PMID:17565660).

Storage

Storage:

Store at -80°C.

Storage Buffer:

PBS only, pH7.3

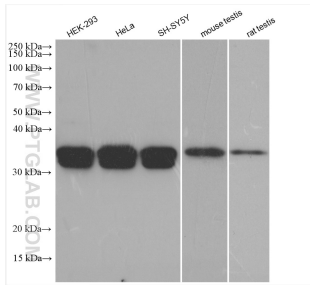
For technical support and original validation data for this product please contact:

T: 1 (888) 4PTGLAB (1-888-478-4522) (toll free in USA), or 1(312) 455-8498 (outside USA)

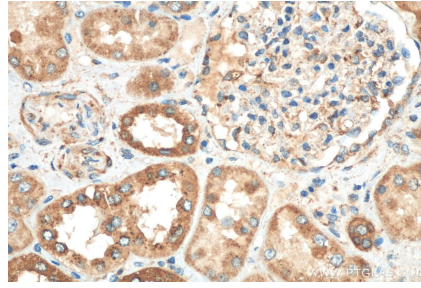
E: proteintech@ptglab.com
W: ptglab.com

This product is exclusively available under Proteintech Group brand and is not available to purchase from any other manufacturer.

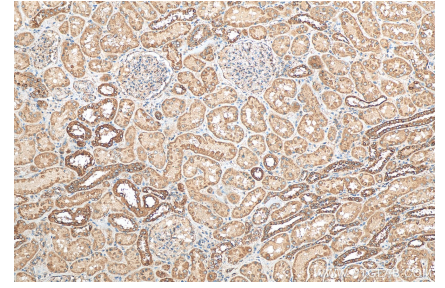
Selected Validation Data



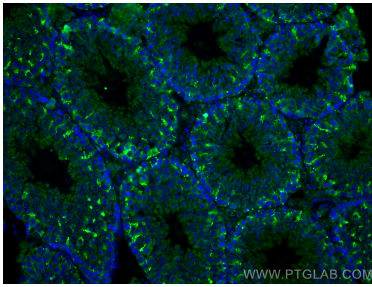
Various lysates were subjected to SDS PAGE followed by western blot with 29653-1-AP (PPT1 antibody) at dilution of 1:3000 incubated at room temperature for 1.5 hours. This data was developed using the same antibody clone with 29653-1-PBS in a different storage buffer formulation.



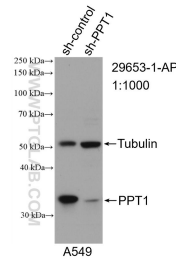
Immunohistochemical analysis of paraffin-embedded human kidney tissue slide using 29653-1-AP (PPT1 antibody) at dilution of 1:400 (under 40x lens). Heat mediated antigen retrieval with Tris-EDTA buffer (pH 9.0). This data was developed using the same antibody clone with 29653-1-PBS in a different storage buffer formulation.



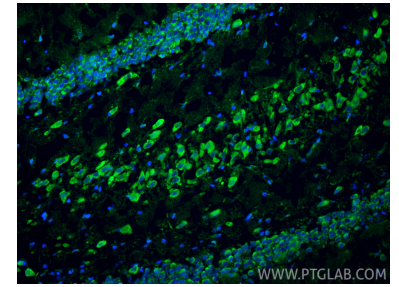
Immunohistochemical analysis of paraffin-embedded human kidney tissue slide using 29653-1-AP (PPT1 antibody) at dilution of 1:400 (under 10x lens). Heat-mediated antigen retrieval with Tris-EDTA buffer (pH 9.0). This data was developed using the same antibody clone with 29653-1-PBS in a different storage buffer formulation.



Immunofluorescent analysis of (4% PFA) fixed mouse testis tissue using PPT1 antibody (29653-1-AP) at dilution of 1:200 and CoraLite®488-Conjugated AffiniPure Goat Anti-Rabbit IgG(H+L). This data was developed using the same antibody clone with 29653-1-PBS in a different storage buffer formulation.



WB result of PPT1 antibody (29653-1-AP; 1:1000; incubated at room temperature for 1.5 hours) with sh-Control and sh-PPT1 transfected A549 cells. This data was developed using the same antibody clone with 29653-1-PBS in a different storage buffer formulation.



Immunofluorescent analysis of (4% PFA) fixed frozen OCT-embedded rat brain tissue using PPT1 antibody (29653-1-AP) at dilution of 1:200 and CoraLite®488-Conjugated Goat Anti-Rabbit IgG(H+L) (SA00013-2). This data was developed using the same antibody clone with 29653-1-PBS in a different storage buffer formulation.