

For Research Use Only

Cannabinoid receptor 1 Polyclonal antibody

Catalog Number: 29708-1-AP

Featured Product

1 Publications



Basic Information

Catalog Number:

29708-1-AP

Size:

150ul, Concentration: 450 ug/ml by Nanodrop;

Source:

Rabbit

Isotype:

IgG

Immunogen Catalog Number:

AG31838

GenBank Accession Number:

BC074812

GeneID (NCBI):

1268

UNIPROT ID:

P21554

Full Name:

cannabinoid receptor 1 (brain)

Calculated MW:

472 aa, 53 kDa

Observed MW:

48 kDa, 66 kDa

Purification Method:

Antigen affinity purification

Recommended Dilutions:

WB 1:5000-1:50000

Applications

Tested Applications:

WB, ELISA

Cited Applications:

WB

Species Specificity:

Human, Mouse, Rat

Cited Species:

mouse

Positive Controls:

WB : mouse brain tissue, SH-SY5Y cells, rat brain tissue

Background Information

Cannabinoid receptor 1 (CNR1, or CB1) and CNR2 (CB2) are members of the guanine-nucleotide-binding protein (G-protein) coupled receptor family. The CB1 receptor is expressed mainly in the brain. The CB2 receptor is expressed mainly in the immune system and in hematopoietic cells. The two receptors have been found to be involved in the cannabinoid-induced CNS effects (including alterations in mood and cognition) experienced by users of marijuana.

Notable Publications

| Author | Pubmed ID | Journal | Application |
|---------|-----------|-------------------|-------------|
| Ming Li | 37718490 | ACS Chem Neurosci | WB |

Storage

Storage:

Store at -20°C. Stable for one year after shipment.

Storage Buffer:

PBS with 0.02% sodium azide and 50% glycerol pH 7.3.

Aliquoting is unnecessary for -20°C storage

*** 20ul sizes contain 0.1% BSA

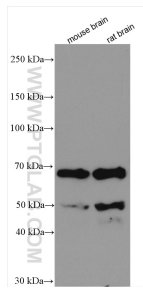
For technical support and original validation data for this product please contact:

T: 1 (888) 4PTGLAB (1-888-478-4522) (toll free in USA), or 1(312) 455-8498 (outside USA)

E: proteintech@ptglab.com
W: ptglab.com

This product is exclusively available under Proteintech Group brand and is not available to purchase from any other manufacturer.

Selected Validation Data



Various lysates were subjected to SDS PAGE followed by western blot with 29708-1-AP (Cannabinoid receptor 1 antibody) at dilution of 1:10000 incubated at room temperature for 1.5 hours.