

For Research Use Only

KLF10 Polyclonal antibody

Catalog Number: 29709-1-AP

2 Publications



Basic Information

Catalog Number: 29709-1-AP	GenBank Accession Number: BC011538	Purification Method: Antigen affinity purification
Size: 150ul , Concentration: 600 ug/ml by Nanodrop;	GeneID (NCBI): 7071	Recommended Dilutions: WB 1:2000-1:16000 IHC 1:50-1:500
Source: Rabbit	UNIPROT ID: Q13118	
Isotype: IgG	Full Name: Kruppel-like factor 10	
Immunogen Catalog Number: AG31772	Calculated MW: 469 aa, 51 kDa	
	Observed MW: 52-75 kDa	

Applications

Tested Applications: WB, IHC, ELISA	Positive Controls: WB : Jurkat cells, K-562 cells, MCF-7 cells IHC : mouse pancreas tissue,
Cited Applications: WB	
Species Specificity: Human, mouse	
Cited Species: human	
Note-IHC: suggested antigen retrieval with TE buffer pH 9.0; (*) Alternatively, antigen retrieval may be performed with citrate buffer pH 6.0	

Background Information

KLF10 (Kruppel-like factor 10), also known as TIEG1, is a transcription factor that plays a role in the regulation of cell growth. KLF10 plays a role in the response to TGF beta (through the TGF beta/Smad signaling pathway) and estrogen. KLF10 has been shown to have a role in skeletal disease (osteopenia/osteoporosis), hypertrophic cardiomyopathy, and breast and prostate cancer. KLF10 can be detected 51-52 kDa, 60-75 kDa (PMID: 21262377, PMID: 30026232).

Notable Publications

Author	Pubmed ID	Journal	Application
Olivia Luyties	39829884	bioRxiv	
Hao Yu	39418248	PLoS One	WB

Storage

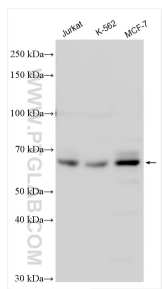
Storage:
Store at -20°C. Stable for one year after shipment.
Storage Buffer:
PBS with 0.02% sodium azide and 50% glycerol pH 7.3.
Aliquoting is unnecessary for -20°C storage

*** 20ul sizes contain 0.1% BSA

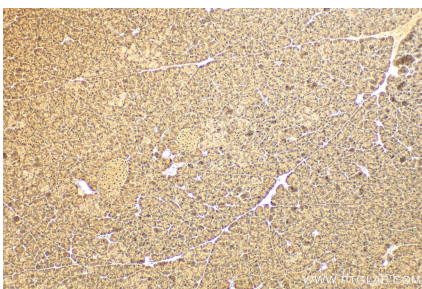
For technical support and original validation data for this product please contact:
T: 1 (888) 4PTGLAB (1-888-478-4522) (toll free in USA), or 1(312) 455-8498 (outside USA)
E: proteintech@ptglab.com
W: ptglab.com

This product is exclusively available under Proteintech Group brand and is not available to purchase from any other manufacturer.

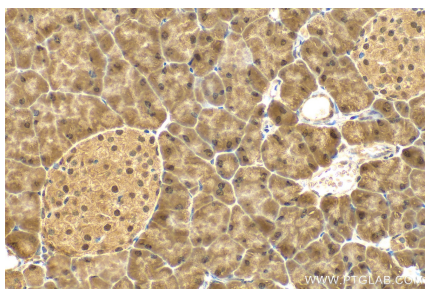
Selected Validation Data



Various lysates were subjected to SDS PAGE followed by western blot with 29709-1-AP (KLF10 antibody) at dilution of 1:8000 incubated at room temperature for 1.5 hours.



Immunohistochemical analysis of paraffin-embedded mouse pancreas tissue slide using 29709-1-AP (KLF10 antibody) at dilution of 1:200 (under 10x lens). Heat mediated antigen retrieval with Tris-EDTA buffer (pH 9.0).



Immunohistochemical analysis of paraffin-embedded mouse pancreas tissue slide using 29709-1-AP (KLF10 antibody) at dilution of 1:200 (under 40x lens). Heat mediated antigen retrieval with Tris-EDTA buffer (pH 9.0).