

For Research Use Only

STUB1 Polyclonal antibody

Catalog Number: 29751-1-AP



Basic Information

Catalog Number:

29751-1-AP

Size:

150ul , Concentration: 450 ug/ml by Nanodrop;

Source:

Rabbit

Isotype:

IgG

Immunogen Catalog Number:

AG31335

GenBank Accession Number:

BC007545

GeneID (NCBI):

10273

UNIPROT ID:

Q9UNE7

Full Name:

STIP1 homology and U-box containing protein 1

Observed MW:

35 kDa

Purification Method:

Antigen affinity purification

Recommended Dilutions:

WB 1:1000-1:6000

Applications

Tested Applications:

WB, ELISA

Species Specificity:

Human, Mouse , Rat

Positive Controls:

WB : A549 cells, HEK-293 cells, HeLa cells, NIH/3T3 cells, PC-12 cells, mouse kidney tissue, rat kidney tissue

Background Information

STIP1 Homology and U-Box Containing Protein 1 (STUB1), formerly known as CHIP (C-terminus of HSP70-Interacting Protein), is a chaperone-dependent E3 ubiquitin ligase. STUB1 is a 34.5 kDa co-chaperone encoded by the STUB1 gene. STUB1 is highly conserved across species and is expressed in most tissues.

Storage

Storage:

Store at -20°C.

Storage Buffer:

PBS with 0.02% sodium azide and 50% glycerol pH 7.3.

Aliquoting is unnecessary for -20°C storage

*** 20ul sizes contain 0.1% BSA

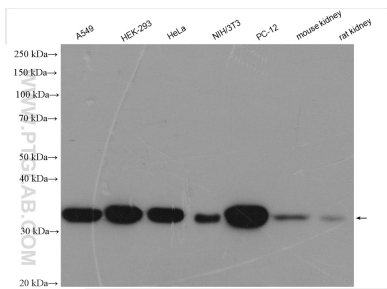
For technical support and original validation data for this product please contact:

T: 1 (888) 4PTGLAB (1-888-478-4522) (toll free in USA), or 1(312) 455-8498 (outside USA)

E: proteintech@ptglab.com
W: ptglab.com

This product is exclusively available under Proteintech Group brand and is not available to purchase from any other manufacturer.

Selected Validation Data



Various lysates were subjected to SDS PAGE followed by western blot with 29751-1-AP (STUB1 antibody) at dilution of 1:3000 incubated at room temperature for 1.5 hours.