

For Research Use Only

# STUB1 Polyclonal antibody, PBS Only

Catalog Number: 29751-1-PBS

Featured Product



## Basic Information

<b>Catalog Number:</b> 29751-1-PBS	<b>GenBank Accession Number:</b> BC007545	<b>Purification Method:</b> Antigen affinity purification
<b>Size:</b> 100ug, Concentration: 1 mg/ml by Nanodrop;	<b>GeneID (NCBI):</b> 10273	
<b>Source:</b> Rabbit	<b>UNIPROT ID:</b> Q9UNE7	
<b>Isotype:</b> IgG	<b>Full Name:</b> STIP1 homology and U-box containing protein 1	
<b>Immunogen Catalog Number:</b> AG31335	<b>Observed MW:</b> 35 kDa	

## Applications

**Tested Applications:**  
WB, IHC, Indirect ELISA

**Species Specificity:**  
human, mouse, rat

## Background Information

STUB1, also named as CHIP, SDCCAG7, UBBOX1 and NY-CO-7, is a E3 ubiquitin-protein ligase which targets misfolded chaperone substrates towards proteasomal degradation. STUB1/CHIP modulates the activity of several chaperone complexes, including Hsp70, Hsc70 and Hsp90. It mediates transfer of non-canonical short ubiquitin chains to HSPA8 that have no effect on HSPA8 degradation. STUB1/CHIP mediates polyubiquitination of CYP3A4. (PMID:10330192) CHIP/STUB1 strongly reduced keratin aggregates through increased degradation of mutant K14. (PMID:20151404) STUB1/CHIP regulates NAD(P)H:quinone oxidoreductase 1 (NQO1) accumulation in aged brain, a process impaired in certain Alzheimer patients. (PMID:21220432)

## Storage

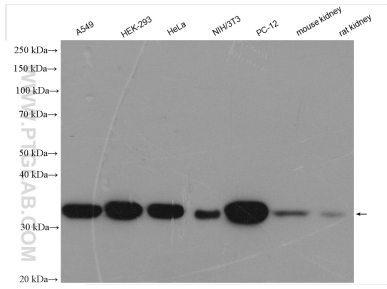
**Storage:**  
Store at -80°C.

**Storage Buffer:**  
PBS only, pH7.3

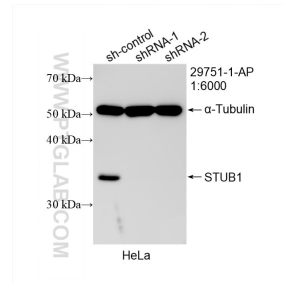
For technical support and original validation data for this product please contact:  
T: 1 (888) 4PTGLAB (1-888-478-4522) (toll free in USA), or 1(312) 455-8498 (outside USA)      E: proteintech@ptglab.com  
W: ptglab.com

This product is exclusively available under Proteintech Group brand and is not available to purchase from any other manufacturer.

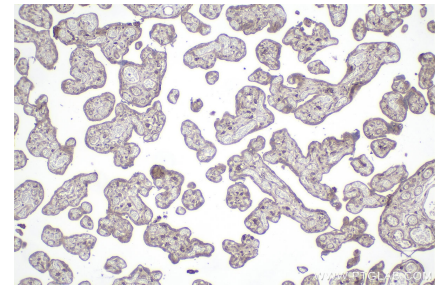
## Selected Validation Data



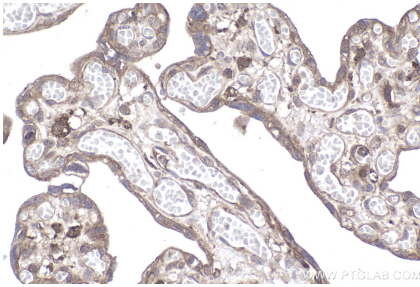
Various lysates were subjected to SDS PAGE followed by western blot with 29751-1-AP (STUB1 antibody) at dilution of 1:3000 incubated at room temperature for 1.5 hours. This data was developed using the same antibody clone with 29751-1-PBS in a different storage buffer formulation.



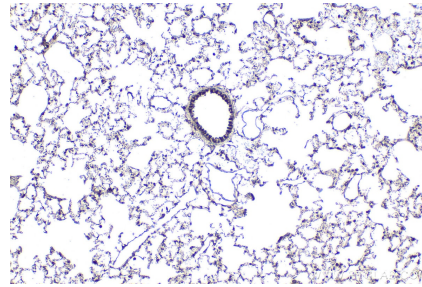
WB result of STUB1 antibody (29751-1-AP; 1:6000; incubated at room temperature for 1.5 hours) with sh-Control and sh-STUB1 transfected HeLa cells. This data was developed using the same antibody clone with 29751-1-PBS in a different storage buffer formulation.



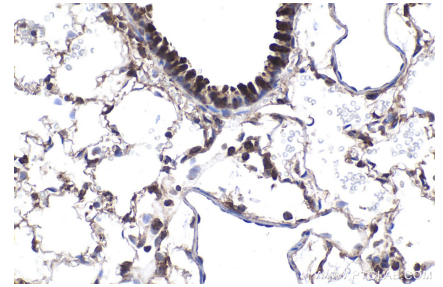
Immunohistochemical analysis of paraffin-embedded human placenta tissue slide using 29751-1-AP (STUB1 antibody) at dilution of 1:500 (under 10x lens). Heat mediated antigen retrieval with Tris-EDTA buffer (pH 9.0). This data was developed using the same antibody clone with 29751-1-PBS in a different storage buffer formulation.



Immunohistochemical analysis of paraffin-embedded human placenta tissue slide using 29751-1-AP (STUB1 antibody) at dilution of 1:500 (under 40x lens). Heat mediated antigen retrieval with Tris-EDTA buffer (pH 9.0). This data was developed using the same antibody clone with 29751-1-PBS in a different storage buffer formulation.



Immunohistochemical analysis of paraffin-embedded rat lung tissue slide using 29751-1-AP (STUB1 antibody) at dilution of 1:500 (under 10x lens). Heat mediated antigen retrieval with Tris-EDTA buffer (pH 9.0). This data was developed using the same antibody clone with 29751-1-PBS in a different storage buffer formulation.



Immunohistochemical analysis of paraffin-embedded rat lung tissue slide using 29751-1-AP (STUB1 antibody) at dilution of 1:500 (under 40x lens). Heat mediated antigen retrieval with Tris-EDTA buffer (pH 9.0). This data was developed using the same antibody clone with 29751-1-PBS in a different storage buffer formulation.