

For Research Use Only

SENP2 Polyclonal antibody

Catalog Number: 29772-1-AP

1 Publications



Basic Information

Catalog Number: 29772-1-AP	GenBank Accession Number: NM_021627	Purification Method: Antigen affinity purification
Size: 150ul , Concentration: 400 ug/ml by Nanodrop;	GeneID (NCBI): 59343	Recommended Dilutions: WB 1:2000-1:10000 IHC 1:500-1:2000
Source: Rabbit	UNIPROT ID: Q9HC62	
Isotype: IgG	Full Name: SUMO1/sentrin/SMT3 specific peptidase 2	
Immunogen Catalog Number: AG30728	Calculated MW: 68 kDa	
	Observed MW: 60-68 kDa	

Applications

Tested Applications: WB, IHC, ELISA	Positive Controls: WB : EC109 cells, MKN-45 cells, SGC-7901 cells IHC : human pancreas cancer tissue,
Cited Applications: WB	
Species Specificity: Human	
Cited Species: human, rat	
Note-IHC: suggested antigen retrieval with TE buffer pH 9.0; (*) Alternatively, antigen retrieval may be performed with citrate buffer pH 6.0	

Background Information

SENP2 (Sentrin-specific protease 2), as a protease, catalyzes two essential functions in the SUMO pathway. The first is the hydrolysis of an alpha-linked peptide bond at the C-terminal end of the small ubiquitin-like modifier (SUMO) propeptides, SUMO1, SUMO2 and SUMO3 leading to the mature form of the proteins (PMID:15296745). The second is the deconjugation of SUMO1, SUMO2 and SUMO3 from targeted proteins, by cleaving an epsilon-linked peptide bond between the C-terminal glycine of the mature SUMO and the lysine epsilon-amino group of the target protein (PMID:20194620, PMID:21965678). It has 2 isoforms with the molecular weight of 66 and 68 kDa.

Notable Publications

Author	Pubmed ID	Journal	Application
Xiangyu Chen	38615367	CNS Neurosci Ther	WB

Storage

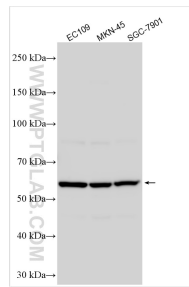
Storage:
Store at -20°C. Stable for one year after shipment.
Storage Buffer:
PBS with 0.02% sodium azide and 50% glycerol pH 7.3.
Aliquoting is unnecessary for -20°C storage

*** 20ul sizes contain 0.1% BSA

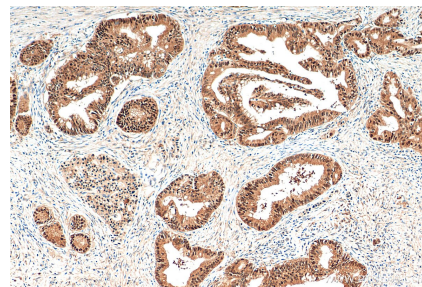
For technical support and original validation data for this product please contact:
T: 1 (888) 4PTGLAB (1-888-478-4522) (toll free in USA), or 1(312) 455-8498 (outside USA)
E: proteintech@ptglab.com
W: ptglab.com

This product is exclusively available under Proteintech Group brand and is not available to purchase from any other manufacturer.

Selected Validation Data



Various lysates were subjected to SDS PAGE followed by western blot with 29772-1-AP (SENP2 antibody) at dilution of 1:5000 incubated at room temperature for 1.5 hours.



Immunohistochemical analysis of paraffin-embedded human pancreas cancer tissue slide using 29772-1-AP (SENP2 antibody) at dilution of 1:1000 (under 10x lens). Heat mediated antigen retrieval with Tris-EDTA buffer (pH 9.0).