

For Research Use Only

# Integrin beta-8 Polyclonal antibody, PBS Only



Catalog Number: 29775-1-PBS

## Basic Information

<b>Catalog Number:</b> 29775-1-PBS	<b>GenBank Accession Number:</b> NM_002214	<b>Purification Method:</b> Antigen affinity purification
<b>Size:</b> 100ug, Concentration: 1 mg/ml by Nanodrop;	<b>GeneID (NCBI):</b> 3696	
<b>Source:</b> Rabbit	<b>UNIPROT ID:</b> P26012	
<b>Isotype:</b> IgG	<b>Full Name:</b> integrin, beta 8	
<b>Immunogen Catalog Number:</b> AG31137	<b>Calculated MW:</b> 86 kDa	
	<b>Observed MW:</b> 95 kDa	

## Applications

**Tested Applications:**  
WB, IHC, Indirect ELISA

**Species Specificity:**  
human, mouse, rat

## Background Information

Integrins are cell adhesion receptors that are heterodimers composed of non-covalently associated alpha and beta subunits. Integrin beta-8 (ITGB8), belongs to the integrin beta chain family, contains an N-terminal signal peptide, a large extracellular domain that includes four cysteine-rich repeats, a transmembrane domain, and a C-terminal cytoplasmic domain (PMID: 1918072). Integrin beta-8 associates with integrin alpha-V (ITGAV) to form an  $\alpha v\beta 8$  heterodimer which has been shown to bind vitronectin, fibronectin, and a latency-associated peptide of TGF- $\beta 1/3$  (PMID: 27033701). Integrin beta-8 contains multiple potential N-linked glycosylation sites. The observed molecular mass of approximately 95 kDa for integrin beta-8 is larger than the predicted 86 kDa, consistent with substantial glycosylation (PMID: 1918072).

## Storage

**Storage:**  
Store at -80°C.

**Storage Buffer:**  
PBS only, pH7.3

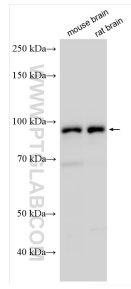
For technical support and original validation data for this product please contact:

T: 1 (888) 4PTGLAB (1-888-478-4522) (toll free in USA), or 1(312) 455-8498 (outside USA)

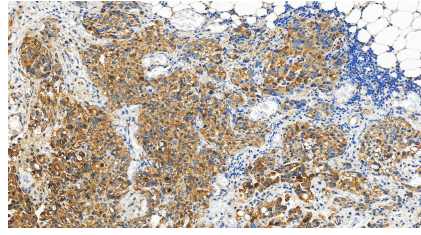
E: [proteintech@ptglab.com](mailto:proteintech@ptglab.com)  
W: [ptglab.com](http://ptglab.com)

**This product is exclusively available under Proteintech Group brand and is not available to purchase from any other manufacturer.**

## Selected Validation Data



Various lysates were subjected to SDS PAGE followed by western blot with 29775-1-AP (Integrin beta-8 antibody) at dilution of 1:10000 incubated at room temperature for 1.5 hours. This data was developed using the same antibody clone with 29775-1-PBS in a different storage buffer formulation.



Immunohistochemical analysis of paraffin-embedded human ovary cancer tissue slide using 29775-1-AP (Integrin beta-8 antibody) at dilution of 1:800 (under 20x lens). Heat mediated antigen retrieval with Tris-EDTA buffer (pH 9.0). This data was developed using the same antibody clone with 29775-1-PBS in a different storage buffer formulation.