

For Research Use Only

SEL1L Polyclonal antibody

Catalog Number: 29801-1-AP



Basic Information

Catalog Number: 29801-1-AP	GenBank Accession Number: NM_005065	Purification Method: Antigen affinity purification
Size: 150ul , Concentration: 600 µg/ml by Nanodrop;	GeneID (NCBI): 6400	Recommended Dilutions: WB 1:1000-1:8000
Source: Rabbit	Full Name: sel-1 suppressor of lin-12-like (C. elegans)	
Isotype: IgG	Calculated MW: 89 kDa	
Immunogen Catalog Number: AG32178	Observed MW: 89 kDa	

Applications

Tested Applications:

WB, ELISA

Species Specificity:

Human, mouse, rat

Positive Controls:

WB : HepG2 cells, BXPc-3 cells, mouse kidney tissue, rat liver tissue

Background Information

SEL1L is part of a protein complex required for the retrotranslocation or dislocation of misfolded proteins from the endoplasmic reticulum lumen to the cytosol, where they are degraded by the proteasome in a ubiquitin-dependent manner.

Storage

Storage:

Store at -20°C. Stable for one year after shipment.

Storage Buffer:

PBS with 0.02% sodium azide and 50% glycerol pH 7.3.

Aliquoting is unnecessary for -20°C storage

***** 20ul sizes contain 0.1% BSA**

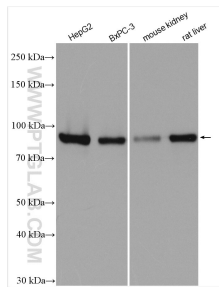
For technical support and original validation data for this product please contact:

T: 1 (888) 4PTGLAB (1-888-478-4522) (toll free in USA), or 1(312) 455-8498 (outside USA)

E: proteintech@ptglab.com
W: ptglab.com

This product is exclusively available under Proteintech Group brand and is not available to purchase from any other manufacturer.

Selected Validation Data



Various lysates were subjected to SDS PAGE followed by western blot with 29801-1-AP (SEL1L antibody) at dilution of 1:4000 incubated at room temperature for 1.5 hours.