

For Research Use Only

RGS12 Polyclonal antibody

Catalog Number: 29803-1-AP



Basic Information

Catalog Number: 29803-1-AP	GenBank Accession Number: NM_198229	Purification Method: Antigen affinity purification
Size: 150ul , Concentration: 650 ug/ml by Nanodrop;	GeneID (NCBI): 6002	Recommended Dilutions: WB 1:1000-1:8000
Source: Rabbit	UNIPROT ID: O14924	IHC 1:250-1:1000
Isotype: IgG	Full Name: regulator of G-protein signaling 12	IF/ICC 1:50-1:500
Immunogen Catalog Number: AG30731	Calculated MW: 156 kDa	
	Observed MW: 140-150 kDa	

Applications

Tested Applications: WB, IHC, IF/ICC, ELISA	Positive Controls:
Species Specificity: human, mouse	WB : HepG2 cells, A431 cells, SH-SY5Y cells, THP-1 cells, NIH/3T3 cells
Note-IHC: suggested antigen retrieval with TE buffer pH 9.0; (*) Alternatively, antigen retrieval may be performed with citrate buffer pH 6.0	IHC : rat cerebellum tissue,
	IF/ICC : PC-3 cells,

Background Information

Regulator of G-protein signaling 12 (RGS12) regulates G protein-coupled receptor signaling cascades. Inhibits signal transduction by increasing the GTPase activity of G protein alpha subunits, thereby driving them into their inactive GDP-bound form. This antibody can be detected as 140-150 kDa.

Storage

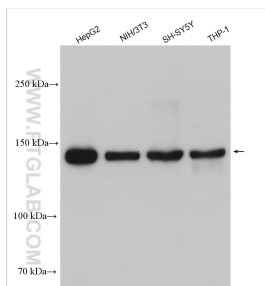
Storage:
Store at -20°C. Stable for one year after shipment.
Storage Buffer:
PBS with 0.02% sodium azide and 50% glycerol pH 7.3.
Aliquoting is unnecessary for -20°C storage

*** 20ul sizes contain 0.1% BSA

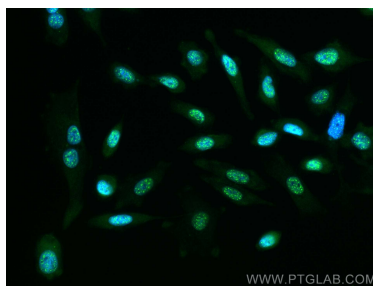
For technical support and original validation data for this product please contact:
T: 1 (888) 4PTGLAB (1-888-478-4522) (toll free in USA), or 1(312) 455-8498 (outside USA)
E: proteintech@ptglab.com
W: ptglab.com

This product is exclusively available under Proteintech Group brand and is not available to purchase from any other manufacturer.

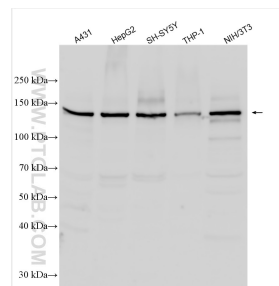
Selected Validation Data



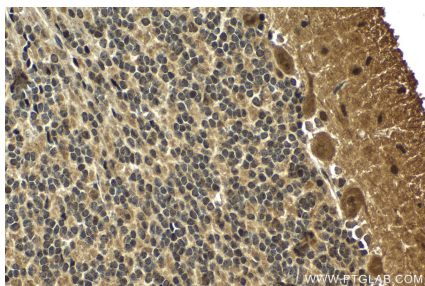
Various lysates were subjected to SDS PAGE followed by western blot with 29803-1-AP (RGS12 antibody) at dilution of 1:4000 incubated at room temperature for 1.5 hours.



Immunofluorescent analysis of (-20°C Methanol) fixed PC-3 cells using RGS12 antibody (29803-1-AP) at dilution of 1:200 and CoraLite®488-Conjugated AffiniPure Goat Anti-Rabbit IgG(H+L).



Various lysates were subjected to SDS PAGE followed by western blot with 29803-1-AP (RGS12 antibody) at dilution of 1:3000 incubated at room temperature for 1.5 hours.



Immunohistochemical analysis of paraffin-embedded rat cerebellum tissue slide using 29803-1-AP (RGS12 antibody) at dilution of 1:500 (under 40x lens). Heat mediated antigen retrieval with Tris-EDTA buffer (pH 9.0).