

For Research Use Only

# RGS12 Polyclonal antibody, PBS Only

Catalog Number: 29803-1-PBS



## Basic Information

**Catalog Number:**

29803-1-PBS

**Size:**

100ug , Concentration: 1 mg/ml by Nanodrop;

**Source:**

Rabbit

**Isotype:**

IgG

**Immunogen Catalog Number:**

AG30731

**GenBank Accession Number:**

NM\_198229

**GeneID (NCBI):**

6002

**UNIPROT ID:**

O14924

**Full Name:**

regulator of G-protein signaling 12

**Calculated MW:**

156 kDa

**Observed MW:**

140-150 kDa

**Purification Method:**

Antigen affinity purification

## Applications

**Tested Applications:**

WB, IHC, IF/ICC, Indirect ELISA

**Species Specificity:**

human, mouse

## Background Information

Regulator of G-protein signaling 12 (RGS12) regulates G protein-coupled receptor signaling cascades. Inhibits signal transduction by increasing the GTPase activity of G protein alpha subunits, thereby driving them into their inactive GDP-bound form. This antibody can be detected as 140-150 kDa.

## Storage

**Storage:**

Store at -80°C.

**Storage Buffer:**

PBS only, pH7.3

For technical support and original validation data for this product please contact:

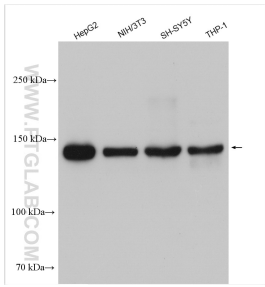
T: 1 (888) 4PTGLAB (1-888-478-4522) (toll free in USA), or 1(312) 455-8498 (outside USA)

E: [proteintech@ptglab.com](mailto:proteintech@ptglab.com)

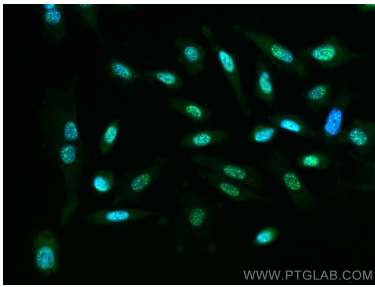
W: [ptglab.com](http://ptglab.com)

This product is exclusively available under Proteintech Group brand and is not available to purchase from any other manufacturer.

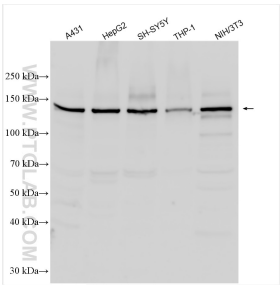
## Selected Validation Data



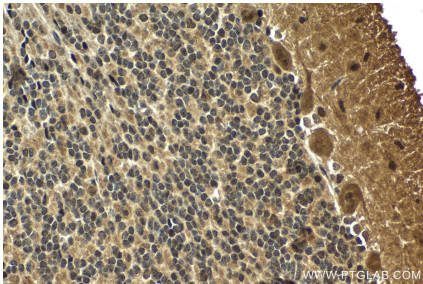
Various lysates were subjected to SDS PAGE followed by western blot with 29803-1-AP (RGS12 antibody) at dilution of 1:4000 incubated at room temperature for 1.5 hours. This data was developed using the same antibody clone with 29803-1-PBS in a different storage buffer formulation.



Immunofluorescent analysis of (-20°C Methanol) fixed PC-3 cells using RGS12 antibody (29803-1-AP) at dilution of 1:200 and CoraLite®488-Conjugated AffiniPure Goat Anti-Rabbit IgG(H+L). This data was developed using the same antibody clone with 29803-1-PBS in a different storage buffer formulation.



Various lysates were subjected to SDS PAGE followed by western blot with 29803-1-AP (RGS12 antibody) at dilution of 1:3000 incubated at room temperature for 1.5 hours. This data was developed using the same antibody clone with 29803-1-PBS in a different storage buffer formulation.



Immunohistochemical analysis of paraffin-embedded rat cerebellum tissue slide using 29803-1-AP (RGS12 antibody) at dilution of 1:500 (under 40x lens). Heat mediated antigen retrieval with Tris-EDTA buffer (pH 9.0). This data was developed using the same antibody clone with 29803-1-PBS in a different storage buffer formulation.