

For Research Use Only

CX3CR1 Polyclonal antibody

Catalog Number: 29819-1-AP



Basic Information

Catalog Number: 29819-1-AP	GenBank Accession Number: BC028078	Purification Method: Antigen affinity purification
Size: 150ul , Concentration: 450 µg/ml by Nanodrop;	GeneID (NCBI): 1524	Recommended Dilutions: WB 1:500-1:3000 IF 1:50-1:500
Source: Rabbit	Full Name: chemokine (C-X3-C motif) receptor 1	
Isotype: IgG	Calculated MW: 40 kDa	
Immunogen Catalog Number: AG27698	Observed MW: 40 kDa, 44 kDa	

Applications

Tested Applications: IF, WB, ELISA	Positive Controls: WB : HeLa cells, SH-SY5Y cells, THP-1 cells, Caco-2 cells IF : mouse kidney tissue,
Species Specificity: Human	

Background Information

CX3CR1, also known as GPR13, V28 and fractalkine receptor, belongs to the 7-transmembrane G protein-coupled receptor (GPCR) family. It is expressed on microglia, astrocytes, NK cells, monocytes/macrophages, and a subpopulation of T cells. CX3CR1 is the receptor for fractalkine (CX3CL1) and mediates both its adhesive and migratory functions. It also acts as coreceptor with CD4 for HIV-1 virus envelope protein (in vitro), and some variations in the gene of CX3CR1 lead to increased susceptibility to HIV-1 infection and rapid progression to AIDS. Defects in CX3CR1 are a cause of susceptibility to age-related macular degeneration type 12 (ARMD12). The two CX3CR1 bands exhibited can be attributed to various factors (PMID: 30628679).

Storage

Storage:
Store at -20°C. Stable for one year after shipment.
Storage Buffer:
PBS with 0.02% sodium azide and 50% glycerol pH 7.3.
Aliquoting is unnecessary for -20°C storage

*** 20ul sizes contain 0.1% BSA

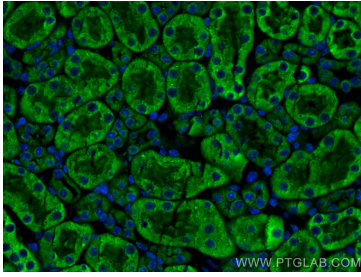
For technical support and original validation data for this product please contact:

T: 1 (888) 4PTGLAB (1-888-478-4522) (toll free in USA), or 1(312) 455-8498 (outside USA)

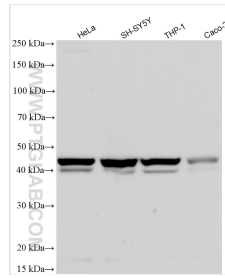
E: proteintech@ptglab.com
W: ptglab.com

This product is exclusively available under Proteintech Group brand and is not available to purchase from any other manufacturer.

Selected Validation Data



Immunofluorescent analysis of (4% PFA) fixed mouse kidney tissue using CX3CR1 antibody (29819-1-AP) at dilution of 1:200 and CoraLite®488-Conjugated AffiniPure Goat Anti-Rabbit IgG(H+L).



Various lysates were subjected to SDS PAGE followed by western blot with 29819-1-AP (CX3CR1 antibody) at dilution of 1:1500 incubated at room temperature for 1.5 hours.