

For Research Use Only

# CX3CR1 Polyclonal antibody, PBS Only

Catalog Number: 29819-1-PBS



## Basic Information

### Catalog Number:

29819-1-PBS

### Size:

100ug, Concentration: 1 mg/ml by Nanodrop;

### Source:

Rabbit

### Isotype:

IgG

### Immunogen Catalog Number:

AG27698

### GenBank Accession Number:

BC028078

### GeneID (NCBI):

1524

### UNIPROT ID:

P49238

### Full Name:

chemokine (C-X3-C motif) receptor 1

### Calculated MW:

40 kDa

### Observed MW:

40 kDa, 44 kDa

### Purification Method:

Antigen affinity purification

## Applications

### Tested Applications:

WB, IF-P, Indirect ELISA

### Species Specificity:

human, mouse

## Background Information

CX3CR1, also known as GPR13, V28 and fractalkine receptor, belongs to the 7-transmembrane G protein-coupled receptor (GPCR) family. It is expressed on microglia, astrocytes, NK cells, monocytes/macrophages, and a subpopulation of T cells. CX3CR1 is the receptor for fractalkine (CX3CL1) and mediates both its adhesive and migratory functions. It also acts as coreceptor with CD4 for HIV-1 virus envelope protein (in vitro), and some variations in the gene of CX3CR1 lead to increased susceptibility to HIV-1 infection and rapid progression to AIDS. Defects in CX3CR1 are a cause of susceptibility to age-related macular degeneration type 12 (ARMD12). The two CX3CR1 bands exhibited can be attributed to various factors (PMID: 30628679).

## Storage

### Storage:

Store at -80°C.

### Storage Buffer:

PBS Only

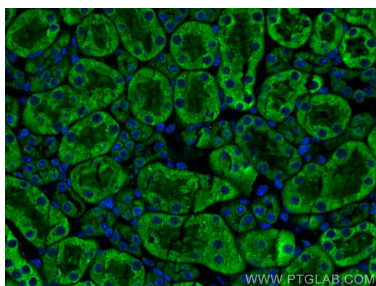
For technical support and original validation data for this product please contact:

T: 1 (888) 4PTGLAB (1-888-478-4522) (toll free in USA), or 1(312) 455-8498 (outside USA)

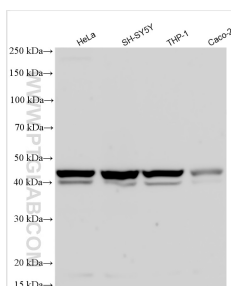
E: [proteintech@ptglab.com](mailto:proteintech@ptglab.com)  
W: [ptglab.com](http://ptglab.com)

This product is exclusively available under Proteintech Group brand and is not available to purchase from any other manufacturer.

## Selected Validation Data



Immunofluorescent analysis of (4% PFA) fixed mouse kidney tissue using CX3CR1 antibody (29819-1-AP) at dilution of 1:200 and CoraLite®488-Conjugated AffiniPure Goat Anti-Rabbit IgG(H+L). This data was developed using the same antibody clone with 29819-1-PBS in a different storage buffer formulation.



Various lysates were subjected to SDS PAGE followed by western blot with 29819-1-AP (CX3CR1 antibody) at dilution of 1:1500 incubated at room temperature for 1.5 hours. This data was developed using the same antibody clone with 29819-1-PBS in a different storage buffer formulation.