

For Research Use Only

RPS23 Polyclonal antibody

Catalog Number: 29834-1-AP



Basic Information

Catalog Number:

29834-1-AP

Size:

150ul , Concentration: 240 ug/ml by Nanodrop;

Source:

Rabbit

Isotype:

IgG

Immunogen Catalog Number:

AG31190

GenBank Accession Number:

NM_001025

GeneID (NCBI):

6228

UNIPROT ID:

P62266

Full Name:

ribosomal protein S23

Calculated MW:

16 kDa

Observed MW:

16-18 kDa

Purification Method:

Antigen affinity purification

Recommended Dilutions:

WB 1:500-1:3000

IF/ICC 1:200-1:800

Applications

Tested Applications:

WB, IF/ICC, ELISA

Species Specificity:

human, mouse

Positive Controls:

WB : A431 cells, U2OS cells, human placenta tissue, mouse ovary tissue

IF/ICC : MCF-7 cells,

Background Information

RPS23 (40S ribosomal protein S23), also called small ribosomal subunit protein uS12, is a subunit of the 40S ribosome and the first precursor of the small eukaryotic ribosomal subunit (PMID: 34516797). It is positioned in the decoding center of the ribosome that serves to maintain translational fidelity by monitoring the complementarity between the mRNA codons being translated and the anti-codons of aminoacyl-tRNAs (PMID: 28257692; 23636399).

Storage

Storage:

Store at -20°C. Stable for one year after shipment.

Storage Buffer:

PBS with 0.02% sodium azide and 50% glycerol pH 7.3.

Aliquoting is unnecessary for -20°C storage

*** 20ul sizes contain 0.1% BSA

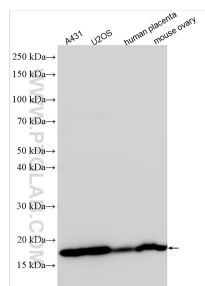
For technical support and original validation data for this product please contact:

T: 1 (888) 4PTGLAB (1-888-478-4522) (toll free in USA), or 1(312) 455-8498 (outside USA)

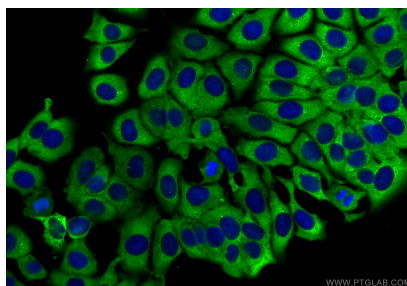
E: proteintech@ptglab.com
W: ptglab.com

This product is exclusively available under Proteintech Group brand and is not available to purchase from any other manufacturer.

Selected Validation Data



Various lysates were subjected to SDS PAGE followed by western blot with 29834-1-AP (RPS23 antibody) at dilution of 1:1500 incubated at room temperature for 1.5 hours.



Immunofluorescent analysis of (-20°C Methanol) fixed MCF-7 cells using RPS23 antibody (29834-1-AP) at dilution of 1:400 and CoraLite® 488-Conjugated Goat Anti-Rabbit IgG(H+L) (SA00013-2).