

For Research Use Only

MIST1 Polyclonal antibody

Catalog Number: 29853-1-AP



Basic Information

Catalog Number: 29853-1-AP	GenBank Accession Number: NM_177455	Purification Method: Antigen affinity purification
Size: 150ul , Concentration: 600 µg/ml by Nanodrop;	GeneID (NCBI): 168620	Recommended Dilutions: WB 1:500-1:2000
Source: Rabbit	Full Name: basic helix-loop-helix family, member a15	
Isotype: IgG	Calculated MW: 21 kDa	
Immunogen Catalog Number: AG32096	Observed MW: 20-30 kDa	

Applications

Tested Applications: WB, ELISA	Positive Controls: WB : mouse pancreas tissue, rat pancreas tissue
Species Specificity: Human, Mouse, Rat	

Background Information

Muscle intestine stomach expression 1 (MIST1), also named BHLHA15, is a secretory cell transcription factor that belongs to the basic helix-loop-helix superfamily. MIST1 is mainly expressed in serous secreted cells and essential for the development and maturation of secretory cells. Secretory cells lacking MIST1 exhibit structural and functional defects, including alterations in cytoskeletal organization and cell polarity and improper cell-cell junction. In healthy pancreata, MIST1 facilitates cell-to-cell communication, promotes acinar cell polarity, controls Ca²⁺ flux, promotes unfolded protein response (UPR) homeostasis, aids in vesicle assembly, and is required for regulated exocytosis. MIST1 was downregulated in pancreatic cancer tissues compared with normal or adjacent pancreatic tissues and lower MIST1 expression in pancreatic cancer cell lines than normal acinar cells (PMID:29859299).

Storage

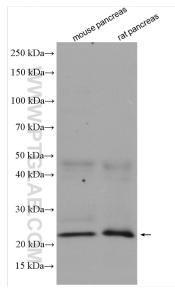
Storage:
Store at -20°C. Stable for one year after shipment.
Storage Buffer:
PBS with 0.02% sodium azide and 50% glycerol pH 7.3.
Aliquoting is unnecessary for -20°C storage

*** 20ul sizes contain 0.1% BSA

For technical support and original validation data for this product please contact:
T: 1 (888) 4PTGLAB (1-888-478-4522) (toll free in USA), or 1(312) 455-8498 (outside USA)
E: proteintech@ptglab.com
W: ptglab.com

This product is exclusively available under Proteintech Group brand and is not available to purchase from any other manufacturer.

Selected Validation Data



Various lysates were subjected to SDS PAGE followed by western blot with 29853-1-AP (MIST1 antibody) at dilution of 1:1000 incubated at room temperature for 1.5 hours.