

For Research Use Only

MIST1 Polyclonal antibody, PBS Only

Catalog Number: 29853-1-PBS



Basic Information

Catalog Number:

29853-1-PBS

Size:

100ug, Concentration: 1 mg/ml by Nanodrop;

Source:

Rabbit

Isotype:

IgG

Immunogen Catalog Number:

AG32096

GenBank Accession Number:

NM_177455

GeneID (NCBI):

168620

UNIPROT ID:

Q7RTS1

Full Name:

basic helix-loop-helix family, member a15

Calculated MW:

21 kDa

Observed MW:

20-30 kDa

Purification Method:

Antigen affinity purification

Applications

Tested Applications:

WB, IHC, Indirect ELISA

Species Specificity:

human, mouse, rat

Background Information

Muscle intestine stomach expression 1 (MIST1), also named BHLHA15, is a secretory cell transcription factor that belongs to the basic helix-loop-helix superfamily. MIST1 is mainly expressed in serous secreted cells and essential for the development and maturation of secretory cells. Secretory cells lacking MIST1 exhibit structural and functional defects, including alterations in cytoskeletal organization and cell polarity and improper cell-cell junction. In healthy pancreata, MIST1 facilitates cell-to-cell communication, promotes acinar cell polarity, controls Ca²⁺ flux, promotes unfolded protein response (UPR) homeostasis, aids in vesicle assembly, and is required for regulated exocytosis. MIST1 was downregulated in pancreatic cancer tissues compared with normal or adjacent pancreatic tissues and lower MIST1 expression in pancreatic cancer cell lines than normal acinar cells (PMID:29859299).

Storage

Storage:

Store at -80°C.

Storage Buffer:

PBS only, pH7.3

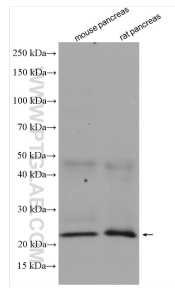
For technical support and original validation data for this product please contact:

T: 1 (888) 4PTGLAB (1-888-478-4522) (toll free in USA), or 1(312) 455-8498 (outside USA)

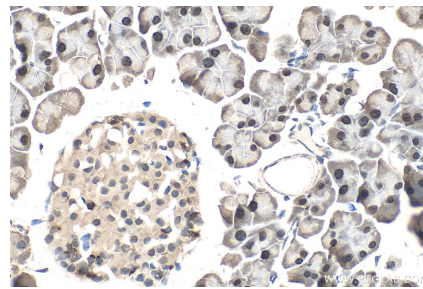
E: proteintech@ptglab.com
W: ptglab.com

This product is exclusively available under Proteintech Group brand and is not available to purchase from any other manufacturer.

Selected Validation Data



Various lysates were subjected to SDS PAGE followed by western blot with 29853-1-AP (MIST1 antibody) at dilution of 1:1000 incubated at room temperature for 1.5 hours. This data was developed using the same antibody clone with 29853-1-PBS in a different storage buffer formulation.



Immunohistochemical analysis of paraffin-embedded mouse pancreas tissue slide using 29853-1-AP (MIST1 antibody) at dilution of 1:200 (under 40x lens). Heat mediated antigen retrieval with Tris-EDTA buffer (pH 9.0). This data was developed using the same antibody clone with 29853-1-PBS in a different storage buffer formulation.