

For Research Use Only

# ENT1 Polyclonal antibody, PBS Only

Catalog Number: 29862-1-PBS

Featured Product



## Basic Information

**Catalog Number:**

29862-1-PBS

**Size:**

100ug, Concentration: 1 mg/ml by Nanodrop;

**Source:**

Rabbit

**Isotype:**

IgG

**Immunogen Catalog Number:**

AG32003

**GenBank Accession Number:**

NM\_001372327.1

**GeneID (NCBI):**

2030

**UNIPROT ID:**

Q99808

**Full Name:**

solute carrier family 29 (nucleoside transporters), member 1

**Calculated MW:**

50KD

**Observed MW:**

70 kDa

**Purification Method:**

Antigen affinity purification

## Applications

**Tested Applications:**

WB, IHC, Indirect ELISA

**Species Specificity:**

human, mouse, rat

## Background Information

ENT1 (equilibrative nucleoside transporter 1; also known as SLC29A1) is a ubiquitous protein located at the cell membrane and is a major transporter responsible for the cellular uptake and release of endogenous nucleosides such as adenosine, and nucleoside analogs used in chemotherapy. The predicted molecular weight of ENT1 is 50 kDa, while heavier 54-68 kDa band may be observed due to the glycosylation (PMID: 16448802, 11850433, 16111480). A smaller novel splice variant of the mouse ENT1 has also been identified, which generates a protein of 35-40 kDa (PMID: 18413666).

## Storage

**Storage:**

Store at -80°C.

**Storage Buffer:**

PBS only, pH7.3

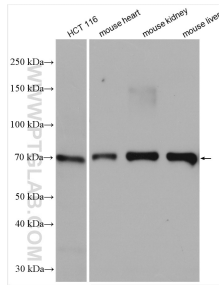
For technical support and original validation data for this product please contact:

T: 1 (888) 4PTGLAB (1-888-478-4522) (toll free in USA), or 1(312) 455-8498 (outside USA)

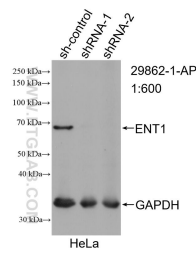
E: [proteintech@ptglab.com](mailto:proteintech@ptglab.com)  
W: [ptglab.com](http://ptglab.com)

This product is exclusively available under Proteintech Group brand and is not available to purchase from any other manufacturer.

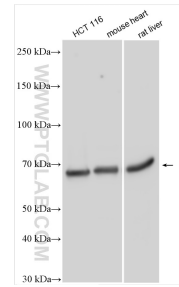
## Selected Validation Data



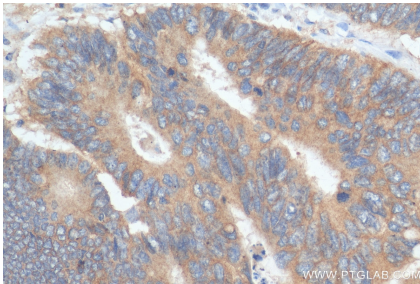
Various lysates were subjected to SDS PAGE followed by western blot with 29862-1-AP (ENT1 antibody) at dilution of 1:800 incubated at room temperature for 1.5 hours. This data was developed using the same antibody clone with 29862-1-PBS in a different storage buffer formulation.



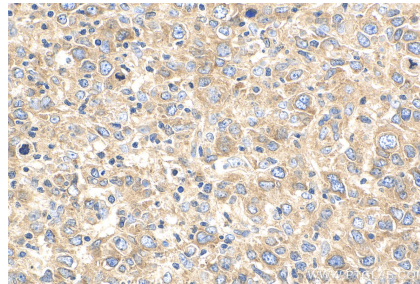
WB result of ENT1 antibody (29862-1-AP; 1:600; incubated at room temperature for 1.5 hours) with sh-Control and sh-ENT1 transfected HeLa cells. This data was developed using the same antibody clone with 29862-1-PBS in a different storage buffer formulation.



Various lysates were subjected to SDS PAGE followed by western blot with 29862-1-AP (ENT1 antibody) at dilution of 1:1000 incubated at room temperature for 1.5 hours. This data was developed using the same antibody clone with 29862-1-PBS in a different storage buffer formulation.



Immunohistochemical analysis of paraffin-embedded human colon cancer tissue slide using 29862-1-AP (ENT1 antibody) at dilution of 1:200 (under 40x lens). Heat mediated antigen retrieval with Tris-EDTA buffer (pH 9.0). This data was developed using the same antibody clone with 29862-1-PBS in a different storage buffer formulation.



Immunohistochemical analysis of paraffin-embedded human lymphoma tissue slide using 29862-1-AP (ENT1 antibody) at dilution of 1:200 (under 40x lens). Heat mediated antigen retrieval with Tris-EDTA buffer (pH 9.0). This data was developed using the same antibody clone with 29862-1-PBS in a different storage buffer formulation.