

For Research Use Only

ADRB2 Polyclonal antibody

Catalog Number: 29864-1-AP **2 Publications**



Basic Information

Catalog Number: 29864-1-AP	GenBank Accession Number: BC012481	Purification Method: Antigen affinity purification
Size: 150ul , Concentration: 450 µg/ml by Nanodrop;	GeneID (NCBI): 154	Recommended Dilutions: WB 1:500-1:3000
Source: Rabbit	Full Name: adrenergic, beta-2-, receptor, surface	
Isotype: IgG	Calculated MW: 46 kDa	
Immunogen Catalog Number: AG32313	Observed MW: 46-48 kDa	

Applications

Tested Applications: WB, ELISA	Positive Controls: WB : A549 cells,
Cited Applications: WB	
Species Specificity: Human	
Cited Species: human, mouse	

Background Information

Beta-2 adrenergic receptor (ADRB2), a member of the G protein-coupled receptor (GPCR) family, binds epinephrine with an approximately 30-fold greater affinity than it does norepinephrine. ADRB2 is directly linked to one of its final effectors, the class C L-type Ca²⁺ channel, Cav1.2 (PMID: 11441182). This receptor-channel complex also contains a G protein, an adenylyl cyclase, cyclic adenosine monophosphate-dependent protein kinase (PKA), and a counteracting phosphatase, PP2A. Different polymorphic forms, point mutations, and/or downregulation of the gene of ADRB2 are associated with nocturnal asthma, obesity, and type 2 diabetes. This antibody detects ADRB2 with a molecular weight of 46-48 kDa as has been shown by some researches (PMID: 30542705; 35075132).

Notable Publications

Author	Pubmed ID	Journal	Application
Xingcheng Lin	37927415	Oncol Lett	WB
Hao-Kun Xu	37680481	iScience	WB

Storage

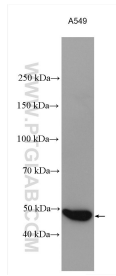
Storage:
Store at -20°C. Stable for one year after shipment.
Storage Buffer:
PBS with 0.02% sodium azide and 50% glycerol pH 7.3.
Aliquoting is unnecessary for -20°C storage

*** 20ul sizes contain 0.1% BSA

For technical support and original validation data for this product please contact:
T: 1 (888) 4PTGLAB (1-888-478-4522) (toll free in USA), or 1(312) 455-8498 (outside USA)
E: proteintech@ptglab.com
W: ptglab.com

This product is exclusively available under Proteintech Group brand and is not available to purchase from any other manufacturer.

Selected Validation Data



A549 cells were subjected to SDS PAGE followed by western blot with 29864-1-AP (ADRB2 antibody) at dilution of 1:1500 incubated at room temperature for 1.5 hours.