

For Research Use Only

ADRB2 Polyclonal antibody, PBS Only

Catalog Number:29864-1-PBS



Basic Information

Catalog Number:

29864-1-PBS

Size:

100ug , Concentration: 1 mg/ml by Nanodrop;

Source:

Rabbit

Isotype:

IgG

Immunogen Catalog Number:

AG32313

GenBank Accession Number:

BC012481

GeneID (NCBI):

154

UNIPROT ID:

P07550

Full Name:

adrenergic, beta-2-, receptor, surface

Calculated MW:

46 kDa

Observed MW:

46-48 kDa

Purification Method:

Antigen affinity purification

Applications

Tested Applications:

WB, IF-P, Indirect ELISA

Species Specificity:

human

Background Information

Beta-2 adrenergic receptor (ADRB2), a member of the G protein-coupled receptor (GPCR) family, binds epinephrine with an approximately 30-fold greater affinity than it does norepinephrine. ADRB2 is directly linked to one of its final effectors, the class C L-type Ca²⁺ channel, Cav1.2 (PMID: 11441182). This receptor-channel complex also contains a G protein, an adenylyl cyclase, cyclic adenosine monophosphate-dependent protein kinase (PKA), and a counteracting phosphatase, PP2A. Different polymorphic forms, point mutations, and/or downregulation of the gene of ADRB2 are associated with nocturnal asthma, obesity, and type 2 diabetes. This antibody detects ADRB2 with a molecular weight of 46-48 kDa, as has been shown by some researches (PMID: 30542705; 35075132).

Storage

Storage:

Store at -80°C.

Storage Buffer:

PBS only, pH7.3

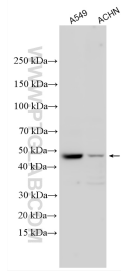
For technical support and original validation data for this product please contact:

T: 1 (888) 4PTGLAB (1-888-478-4522) (toll free in USA), or 1(312) 455-8498 (outside USA)

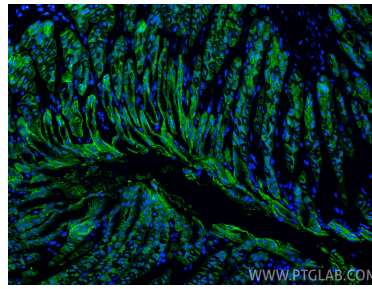
E: proteintech@ptglab.com
W: ptglab.com

This product is exclusively available under Proteintech Group brand and is not available to purchase from any other manufacturer.

Selected Validation Data



Various lysates were subjected to SDS PAGE followed by western blot with 29864-1-AP (ADRB2 antibody) at dilution of 1:2500 incubated at room temperature for 1.5 hours. This data was developed using the same antibody clone with 29864-1-PBS in a different storage buffer formulation.



Immunofluorescent analysis of (4% PFA) fixed paraffin-embedded mouse stomach tissue using ADRB2 antibody (29864-1-AP) at dilution of 1:200 and CoraLite®488-Conjugated Goat Anti-Rabbit IgG(H+L) (SA00013-2). Heat mediated antigen retrieval with Tris-EDTA buffer (pH 9.0). This data was developed using the same antibody clone with 29864-1-PBS in a different storage buffer formulation.