

For Research Use Only

Phospho-PPP1CA (Thr320) Polyclonal antibody



Catalog Number: 29874-1-AP

Basic Information

Catalog Number: 29874-1-AP	GenBank Accession Number: BC001888	Purification Method: Antigen affinity purification
Size: 100ul , Concentration: 250 µg/ml by Nanodrop;	GeneID (NCBI): 5499	Recommended Dilutions: WB 1:1000-1:6000
Source: Rabbit	Full Name: protein phosphatase 1, catalytic subunit, alpha isoform	
Isotype: IgG	Calculated MW: 330 aa, 38 kDa	
	Observed MW: 37 kDa	

Applications

Tested Applications: WB, ELISA	Positive Controls: WB : Calyculin A treated HeLa cells, Calyculin A treated Jurkat cells
Species Specificity: Human	

Background Information

Protein phosphatase associates with over 200 regulatory proteins to form highly specific holoenzymes which dephosphorylate hundreds of biological targets. Type 1 protein phosphatase (PP1), a serine/threonine phosphatase, is essential for cell division and participates in the regulation of glycogen metabolism, muscle contractility, and protein synthesis. Four isoforms of PP1 have been characterized: PP1 α , PP1 δ , PP1 γ 1 and PP1 γ 2 (PMID: 9835651). It has been illustrated that PP1 dephosphorylates Rb and cdc25 during mitosis (PMID: 8384581, PMID: 1392080). A cell cycle-dependent phosphorylation at Thr320 of PP1 α by cdc2 kinase inhibits PP1 α activity (PMID: 9122166).

Storage

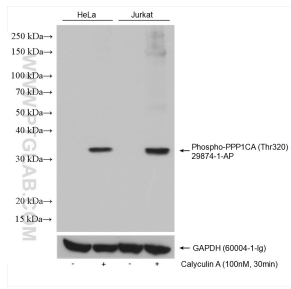
Storage:
Store at -20°C. Stable for one year after shipment.
Storage Buffer:
PBS with 0.02% sodium azide and 50% glycerol pH 7.3.
Aliquoting is unnecessary for -20°C storage

*** 20ul sizes contain 0.1% BSA

For technical support and original validation data for this product please contact:
T: 1 (888) 4PTGLAB (1-888-478-4522) (toll free in USA), or 1(312) 455-8498 (outside USA) E: proteintech@ptglab.com W: ptglab.com

This product is exclusively available under Proteintech Group brand and is not available to purchase from any other manufacturer.

Selected Validation Data



Non-treated and Calyculin A treated various cells were subjected to SDS PAGE followed by western blot with 29874-1-AP (Phospho-PPP1CA (Thr320) antibody) at dilution of 1:3000 incubated at room temperature for 1.5 hours. The membrane was stripped and re-blotted with GAPDH antibody as the loading control.