

For Research Use Only

PFKFB4 Polyclonal antibody

Catalog Number: 29902-1-AP



Basic Information

Catalog Number: 29902-1-AP	GenBank Accession Number: NM_001317134	Purification Method: Antigen affinity purification
Size: 150ul , Concentration: 1000 µg/ml by Nanodrop;	GeneID (NCBI): 5210	Recommended Dilutions: WB 1:1000-1:4000 IHC 1:50-1:500 IF 1:200-1:800
Source: Rabbit	Full Name: 6-phosphofructo-2-kinase/fructose-2,6-bisphosphatase 4	
Isotype: IgG	Calculated MW: 54 kDa	
Immunogen Catalog Number: AG30571	Observed MW: 54 kDa	

Applications

Tested Applications: IF, IHC, WB, ELISA	Positive Controls: WB : MDA-MB-231 cells, PC-3 cells, Raji cells IHC : human kidney tissue, mouse testis tissue IF : HUVEC cells,
Species Specificity: Human, Mouse	
Note-IHC: suggested antigen retrieval with TE buffer pH 9.0; (*) Alternatively, antigen retrieval may be performed with citrate buffer pH 6.0	

Background Information

PFKFB4 (6-phosphofructo-2-kinase/fructose-2,6-bisphosphatase 4), is a bi-function enzyme. On one hand, PFKFB4 synthesizes fructose 2,6-bisphosphate (F2,6-BP) to stimulate glycolysis, playing important roles in metabolic processes. On the other hand, PFKFB4 acts as a phosphatase to hydrolyze F2,6-BP into fructose-6-phosphate (F6P) and inorganic phosphate (Pi), functioning as a protein kinase to phosphorylate protein substrates. The dual function of PFKFB4 makes it involved in multiple biological processes such as cell cycle regulation, cell proliferation and transcriptional regulation (PMID: 33593309). PFKFB4 has been reported to be involved in a variety of cancers including human bladder cancer, gastric cancer, colon cancer, breast cancer and other malignant tumors (PMID: 21396842, PMID: 33732372, PMID: 31244553).

Storage

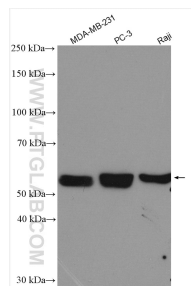
Storage:
Store at -20°C. Stable for one year after shipment.
Storage Buffer:
PBS with 0.02% sodium azide and 50% glycerol pH 7.3.
Aliquoting is unnecessary for -20°C storage

*** 20ul sizes contain 0.1% BSA

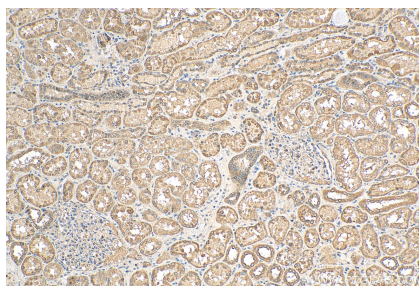
For technical support and original validation data for this product please contact:
T: 1 (888) 4PTGLAB (1-888-478-4522) (toll free in USA), or 1(312) 455-8498 (outside USA)
E: proteintech@ptglab.com
W: ptglab.com

This product is exclusively available under Proteintech Group brand and is not available to purchase from any other manufacturer.

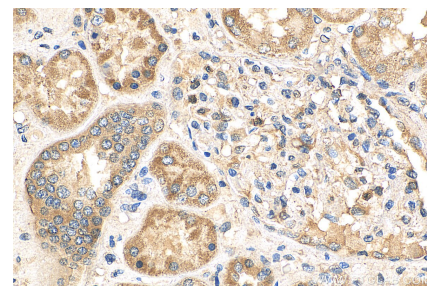
Selected Validation Data



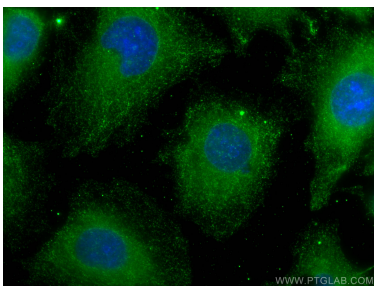
Various lysates were subjected to SDS PAGE followed by western blot with 29902-1-AP (PFKFB4 antibody) at dilution of 1:2000 incubated at room temperature for 1.5 hours.



Immunohistochemical analysis of paraffin-embedded human kidney tissue slide using 29902-1-AP (PFKFB4 antibody) at dilution of 1:200 (under 10x lens). Heat mediated antigen retrieval with Tris-EDTA buffer (pH 9.0).



Immunohistochemical analysis of paraffin-embedded human kidney tissue slide using 29902-1-AP (PFKFB4 antibody) at dilution of 1:200 (under 40x lens). Heat mediated antigen retrieval with Tris-EDTA buffer (pH 9.0).



Immunofluorescent analysis of (-20°C Methanol) fixed HUVEC cells using PFKFB4 antibody (29902-1-AP) at dilution of 1:400 and CoraLite®488-Conjugated AffiniPure Goat Anti-Rabbit IgG(H+L).