

For Research Use Only

# PFKFB4 Polyclonal antibody, PBS Only

Catalog Number:29902-1-PBS



## Basic Information

<b>Catalog Number:</b> 29902-1-PBS	<b>GenBank Accession Number:</b> NM_001317134	<b>Purification Method:</b> Antigen affinity purification
<b>Size:</b> 100ug , Concentration: 1 mg/ml by Nanodrop;	<b>GeneID (NCBI):</b> 5210	
<b>Source:</b> Rabbit	<b>UNIPROT ID:</b> Q16877	
<b>Isotype:</b> IgG	<b>Full Name:</b> 6-phosphofructo-2-kinase/fructose-2,6-bisphosphatase 4	
<b>Immunogen Catalog Number:</b> AG30571	<b>Calculated MW:</b> 54 kDa	
	<b>Observed MW:</b> 54 kDa	

## Applications

**Tested Applications:**  
WB, IHC, IF/ICC, Indirect ELISA

**Species Specificity:**  
human, mouse

## Background Information

PFKFB4 (6-phosphofructo-2-kinase/fructose-2,6-bisphosphatase 4), is a bi-function enzyme. On one hand, PFKFB4 synthesizes fructose 2,6-bisphosphate (F2,6-BP) to stimulate glycolysis, playing important roles in metabolic processes. On the other hand, PFKFB4 acts as a phosphatase to hydrolyze F2,6-BP into fructose-6-phosphate (F6P) and inorganic phosphate (Pi), functioning as a protein kinase to phosphorylate protein substrates. The dual function of PFKFB4 makes it involved in multiple biological processes such as cell cycle regulation, cell proliferation and transcriptional regulation(PMID: 33593309). PFKFB4 has been reported to be involved in a variety of cancers including human bladder cancer, gastric cancer, colon cancer, breast cancer and other malignant tumors(PMID: 21396842, PMID: 33732372, PMID: 31244553).

## Storage

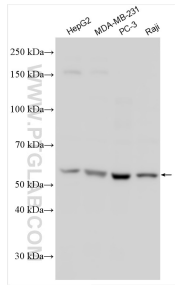
**Storage:**  
Store at -80°C.

**Storage Buffer:**  
PBS only, pH7.3

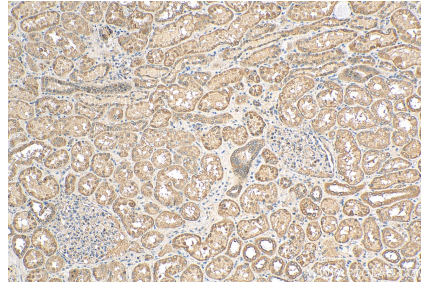
For technical support and original validation data for this product please contact:  
T: 1 (888) 4PTGLAB (1-888-478-4522) (toll free in USA), or 1(312) 455-8498 (outside USA)      E: proteintech@ptglab.com  
W: ptglab.com

This product is exclusively available under Proteintech Group brand and is not available to purchase from any other manufacturer.

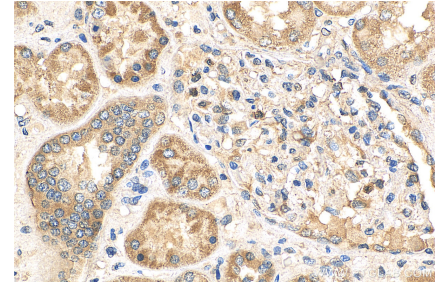
## Selected Validation Data



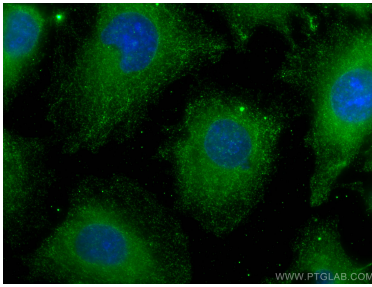
Various lysates were subjected to SDS PAGE followed by western blot with 29902-1-AP (PFKFB4 antibody) at dilution of 1:2000 incubated at room temperature for 1.5 hours. This data was developed using the same antibody clone with 29902-1-PBS in a different storage buffer formulation.



Immunohistochemical analysis of paraffin-embedded human kidney tissue slide using 29902-1-AP (PFKFB4 antibody) at dilution of 1:200 (under 10x lens). Heat mediated antigen retrieval with Tris-EDTA buffer (pH 9.0). This data was developed using the same antibody clone with 29902-1-PBS in a different storage buffer formulation.



Immunohistochemical analysis of paraffin-embedded human kidney tissue slide using 29902-1-AP (PFKFB4 antibody) at dilution of 1:200 (under 40x lens). Heat mediated antigen retrieval with Tris-EDTA buffer (pH 9.0). This data was developed using the same antibody clone with 29902-1-PBS in a different storage buffer formulation.



Immunofluorescent analysis of (-20°C Methanol) fixed HUVEC cells using PFKFB4 antibody (29902-1-AP) at dilution of 1:400 and CoraLite@488-Conjugated AffiniPure Goat Anti-Rabbit IgG(H+L). This data was developed using the same antibody clone with 29902-1-PBS in a different storage buffer formulation.