

For Research Use Only

CRELD1 Polyclonal antibody

Catalog Number: 29903-1-AP



Basic Information

Catalog Number: 29903-1-AP	GenBank Accession Number: NM_001031717	Purification Method: Antigen affinity purification
Size: 150ul , Concentration: 1400 ug/ml by Nanodrop;	GeneID (NCBI): 78987	Recommended Dilutions: WB 1:1000-1:6000
Source: Rabbit	UNIPROT ID: Q96HD1	IHC 1:50-1:500 IF/ICC 1:200-1:800
Isotype: IgG	Full Name: cysteine-rich with EGF-like domains 1	
Immunogen Catalog Number: AG31593	Calculated MW: 45KD	
	Observed MW: 45 kDa, 70-75 kDa	

Applications

Tested Applications: WB, IHC, IF/ICC, ELISA	Positive Controls:
Species Specificity: Human, mouse, rat	WB : HepG2 cells, mouse lung tissue, rat lung tissue
Note-IHC: suggested antigen retrieval with TE buffer pH 9.0; (*) Alternatively, antigen retrieval may be performed with citrate buffer pH 6.0	IHC : mouse heart tissue,
	IF/ICC : U2OS cells,

Background Information

CRELD1 (Cysteine-rich with EGF-like domain protein 1) belongs to matricellular proteins family. The encoded protein has a cysteine-rich with epidermal growth factor-like domain (PubMed: 12137942). Mutations in CRELD1 are the cause of atrioventricular septal defect (PubMed: 24697899). Alternate splicing results in multiple transcript variants. CRELD1 can be detected as 70-75 kDa in mouse lung (PMID: 24697899).

Storage

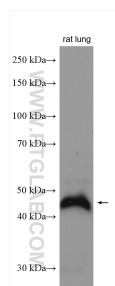
Storage:
Store at -20°C. Stable for one year after shipment.
Storage Buffer:
PBS with 0.02% sodium azide and 50% glycerol pH 7.3.
Aliquoting is unnecessary for -20°C storage

*** 20ul sizes contain 0.1% BSA

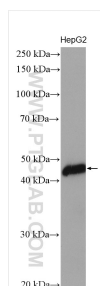
For technical support and original validation data for this product please contact:
T: 1 (888) 4PTGLAB (1-888-478-4522) (toll free in USA), or 1(312) 455-8498 (outside USA)
E: proteintech@ptglab.com
W: ptglab.com

This product is exclusively available under Proteintech Group brand and is not available to purchase from any other manufacturer.

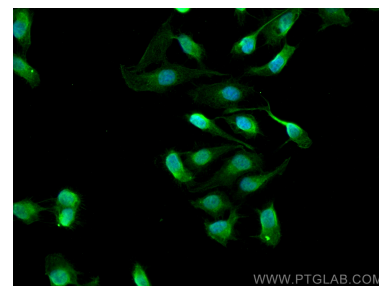
Selected Validation Data



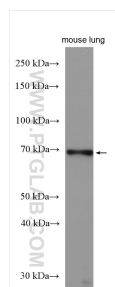
rat lung tissue were subjected to SDS PAGE followed by western blot with 29903-1-AP (CRELD1 antibody) at dilution of 1:2000 incubated at room temperature for 1.5 hours.



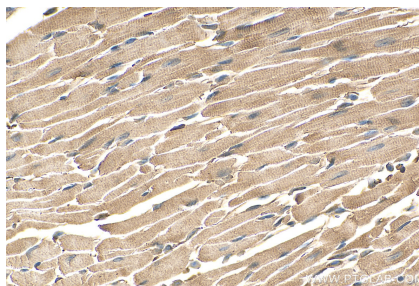
HepG2 cells were subjected to SDS PAGE followed by western blot with 29903-1-AP (CRELD1 antibody) at dilution of 1:3000 incubated at room temperature for 1.5 hours.



Immunofluorescent analysis of (4% PFA) fixed U2OS cells using CRELD1 antibody (29903-1-AP) at dilution of 1:400 and CoraLite@488-Conjugated AffiniPure Goat Anti-Rabbit IgG(H+L).



mouse lung tissue were subjected to SDS PAGE followed by western blot with 29903-1-AP (CRELD1 antibody) at dilution of 1:2000 incubated at room temperature for 1.5 hours.



Immunohistochemical analysis of paraffin-embedded mouse heart tissue slide using 29903-1-AP (CRELD1 antibody) at dilution of 1:200 (under 40x lens). Heat mediated antigen retrieval with Tris-EDTA buffer (pH 9.0).