

For Research Use Only

TPH1 Polyclonal antibody

Catalog Number: 29904-1-AP



Basic Information

Catalog Number: 29904-1-AP	GenBank Accession Number: BC106739	Purification Method: Antigen affinity purification
Size: 150ul , Concentration: 810 ug/ml by Nanodrop;	GeneID (NCBI): 7166	Recommended Dilutions: WB: 1:500-1:1000 IHC: 1:50-1:500
Source: Rabbit	UNIPROT ID: P17752	
Isotype: IgG	Full Name: tryptophan hydroxylase 1	
Immunogen Catalog Number: AG31623	Calculated MW: 466 aa, 53 kDa	
	Observed MW: 51 kDa	

Applications

Tested Applications: WB, IHC, ELISA	Positive Controls:
Species Specificity: human, mouse	WB : SH-SY5Y cells, SK-N-SH cells IHC : mouse cerebellum tissue,

Note-IHC: suggested antigen retrieval with TE buffer pH 9.0; (*) Alternatively, antigen retrieval may be performed with citrate buffer pH 6.0

Background Information

Tryptophan hydroxylase 1 (TPH1) is the rate-limiting enzyme in the synthesis of serotonin (5-HT) from the amino acid tryptophan. It is primarily found in peripheral tissues such as the gut, pineal gland, and spleen. TPH1 plays a crucial role in regulating peripheral serotonin levels, which are involved in various physiological processes including gastrointestinal motility and cardiovascular function. Additionally, TPH1 has been implicated in the regulation of blood glucose levels and is associated with conditions such as fatty liver disease. (PMID: 32590025, PMID: 36331742, PMID: 37652099)

Storage

Storage:
Store at -20°C. Stable for one year after shipment.
Storage Buffer:
PBS with 0.02% sodium azide and 50% glycerol, pH7.3
Aliquoting is unnecessary for -20°C storage

***** 20ul sizes contain 0.1%BSA**

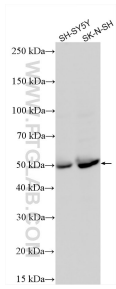
For technical support and original validation data for this product please contact:

T: 1 (888) 4PTGLAB (1-888-478-4522) (toll free in USA), or 1(312) 455-8498 (outside USA)

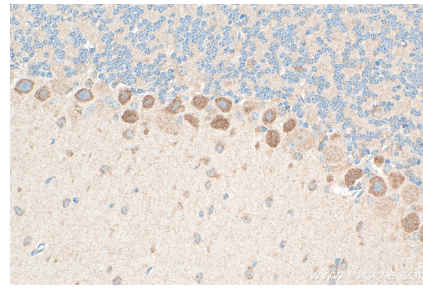
E: proteintech@ptglab.com
W: ptglab.com

This product is exclusively available under Proteintech Group brand and is not available to purchase from any other manufacturer.

Selected Validation Data



Various lysates were subjected to SDS PAGE followed by western blot with 29904-1-AP (TPH1 antibody) at dilution of 1:600 incubated at room temperature for 1.5 hours.



Immunohistochemical analysis of paraffin-embedded mouse cerebellum tissue slide using 29904-1-AP (TPH1 antibody) at dilution of 1:200 (under 40x lens). Heat mediated antigen retrieval with Tris-EDTA buffer (pH 9.0).