

For Research Use Only

Kindlin 2 Polyclonal antibody

Catalog Number: 29911-1-AP



Basic Information

Catalog Number: 29911-1-AP	GenBank Accession Number: BC017327	Purification Method: Antigen affinity purification
Size: 150ul , Concentration: 800 µg/ml by Nanodrop;	GeneID (NCBI): 10979	Recommended Dilutions: WB 1:2000-1:12000 IHC 1:50-1:500
Source: Rabbit	Full Name: fermitin family homolog 2 (Drosophila)	
Isotype: IgG	Calculated MW: 680 aa, 78 kDa	
Immunogen Catalog Number: AG31795	Observed MW: 78 kDa	

Applications

Tested Applications: IHC, WB, ELISA	Positive Controls:
Species Specificity: Human	WB : A549 cells, HEK-293 cells, HeLa cells IHC : human lung cancer tissue,

Note-IHC: suggested antigen retrieval with TE buffer pH 9.0; (*) Alternatively, antigen retrieval may be performed with citrate buffer pH 6.0

Background Information

FERMT2, also named as KIND2, MIG2, PLEKHC1, MIG-2 and Kindlin-2, belongs to the kindlin family. There are three FERMT2 isoforms that participate in the connection between extracellular matrix (ECM) adhesion sites and the actin cytoskeleton and also in the orchestration of actin assembly and cell shape modulation. FERMT2 recruits migfilin (FBLP1) protein to cell-ECM focal adhesion sites. Variable expression in human cancers and mesenchymal cancer invasion are now linked with FERMT2, which may play an important role in carcinomas development. Catalog#11453-1-AP is a rabbit polyclonal antibody against human FERMT2.

Storage

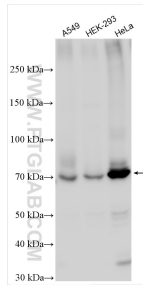
Storage:
Store at -20°C. Stable for one year after shipment.
Storage Buffer:
PBS with 0.02% sodium azide and 50% glycerol pH 7.3.
Aliquoting is unnecessary for -20°C storage

*** 20ul sizes contain 0.1% BSA

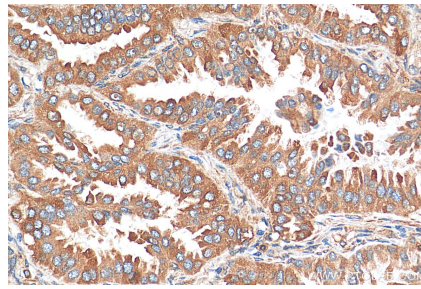
For technical support and original validation data for this product please contact:
T: 1 (888) 4PTGLAB (1-888-478-4522) (toll free in USA), or 1(312) 455-8498 (outside USA)
E: proteintech@ptglab.com
W: ptglab.com

This product is exclusively available under Proteintech Group brand and is not available to purchase from any other manufacturer.

Selected Validation Data



Various lysates were subjected to SDS PAGE followed by western blot with 29911-1-AP (Kindlin 2 antibody) at dilution of 1:6000 incubated at room temperature for 1.5 hours.



Immunohistochemical analysis of paraffin-embedded human lung cancer tissue slide using 29911-1-AP (Kindlin 2 antibody) at dilution of 1:200 (under 40x lens). Heat mediated antigen retrieval with Tris-EDTA buffer (pH 9.0).