

For Research Use Only

POLL Polyclonal antibody

Catalog Number: 29920-1-AP



Basic Information

Catalog Number:

29920-1-AP

Size:

150ul, Concentration: 900 ug/ml by Nanodrop;

Source:

Rabbit

Isotype:

IgG

Immunogen Catalog Number:

AG31995

GenBank Accession Number:

BC068529

GeneID (NCBI):

27343

UNIPROT ID:

Q9UGP5

Full Name:

polymerase (DNA directed), lambda

Calculated MW:

63 kDa

Observed MW:

63-70 kDa

Purification Method:

Antigen affinity purification

Recommended Dilutions:

WB 1:1000-1:5000

Applications

Tested Applications:

WB, ELISA

Species Specificity:

Human

Positive Controls:

WB : L02 cells, HEK-293 cells, HepG2 cells, HEK-293T cells

Background Information

POLL (DNA polymerase lambda) functions in DNA repair (PMID: 11457865, PMID: 19806195, PMID: 20693240, PMID: 30250067). POLL has 5-prime-deoxyribose-5-phosphate lyase activity and strand-displacement synthesis activity on gapped DNA substrates, indicating that POLL participates in short- and long-patch base excision repair. POLL is involved in base excision repair (BER) responsible for repair of lesions that give rise to abasic (AP) sites in DNA (PMID: 11457865, PMID: 19806195).

Storage

Storage:

Store at -20°C. Stable for one year after shipment.

Storage Buffer:

PBS with 0.02% sodium azide and 50% glycerol pH 7.3.

Aliquoting is unnecessary for -20°C storage

*** 20ul sizes contain 0.1% BSA

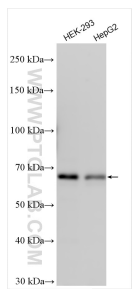
For technical support and original validation data for this product please contact:

T: 1 (888) 4PTGLAB (1-888-478-4522) (toll free in USA), or 1(312) 455-8498 (outside USA)

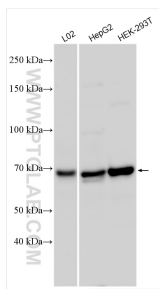
E: proteintech@ptglab.com
W: ptglab.com

This product is exclusively available under Proteintech Group brand and is not available to purchase from any other manufacturer.

Selected Validation Data



Various lysates were subjected to SDS PAGE followed by western blot with 29920-1-AP (POLL antibody) at dilution of 1:1500 incubated at room temperature for 1.5 hours.



Various lysates were subjected to SDS PAGE followed by western blot with 29920-1-AP (POLL antibody) at dilution of 1:2500 incubated at room temperature for 1.5 hours.