

For Research Use Only

M-cadherin Polyclonal antibody

Catalog Number: 29928-1-AP



Basic Information

Catalog Number: 29928-1-AP	GenBank Accession Number: BC008951	Purification Method: Antigen affinity purification
Size: 150ul , Concentration: 500 µg/ml by Nanodrop;	GeneID (NCBI): 1013	Recommended Dilutions: WB 1:1000-1:6000
Source: Rabbit	Full Name: cadherin 15, type 1, M-cadherin (myotubule)	
Isotype: IgG	Calculated MW: 89 kDa	
Immunogen Catalog Number: AG25763	Observed MW: 130 kDa	

Applications

Tested Applications: WB, ELISA	Positive Controls: WB : C2C12 cells,
Species Specificity: Human, Rat	

Background Information

Cadherins are a family of transmembrane glycoproteins that mediate calcium-dependent cell-cell adhesion and play an important role in the maintenance of normal tissue architecture. M-cadherin (muscle cadherin), also known as CDH15 (cadherin-15), is a 124-kDa type I transmembrane glycoprotein that is highly expressed in developing skeletal muscle, satellite cells, and cerebellum (PMID: 9545347; 12052883). It associates with β -catenin and functions as a cell-cell adhesion molecule in a homophilic and specific manner (PMID: 9545347). M-cadherin is part of the myogenic program and may provide a trigger for terminal muscle differentiation (PMID: 1840697).

Storage

Storage:
Store at -20°C. Stable for one year after shipment.
Storage Buffer:
PBS with 0.02% sodium azide and 50% glycerol pH 7.3.
Aliquoting is unnecessary for -20°C storage

*** 20ul sizes contain 0.1% BSA

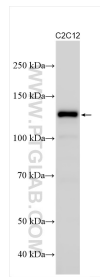
For technical support and original validation data for this product please contact:

T: 1 (888) 4PTGLAB (1-888-478-4522) (toll free in USA), or 1(312) 455-8498 (outside USA)

E: proteintech@ptglab.com
W: ptglab.com

This product is exclusively available under Proteintech Group brand and is not available to purchase from any other manufacturer.

Selected Validation Data



C2C12 cells were subjected to SDS PAGE followed by western blot with 29928-1-AP (M-cadherin antibody) at dilution of 1:3000 incubated at room temperature for 1.5 hours.