

For Research Use Only

SERPINA6/CBG Polyclonal antibody

Catalog Number: 29931-1-AP



Basic Information

Catalog Number:

29931-1-AP

Size:

150ul, Concentration: 600 µg/ml by Nanodrop;

Source:

Rabbit

Isotype:

IgG

Immunogen Catalog Number:

AG31861

GenBank Accession Number:

BC058021

GeneID (NCBI):

866

UNIPROT ID:

P08185

Full Name:

serpin peptidase inhibitor, clade A (alpha-1 antiproteinase, antitrypsin), member 6

Calculated MW:

405 aa, 45 kDa

Observed MW:

45-55 kDa

Purification Method:

Antigen affinity purification

Recommended Dilutions:

WB: 1:1000-1:6000

IHC: 1:50-1:500

Applications

Tested Applications:

WB, IHC, ELISA

Species Specificity:

human

Positive Controls:

WB : human plasma,

IHC : human kidney tissue,

Note-IHC: suggested antigen retrieval with TE buffer pH 9.0; (*) Alternatively, antigen retrieval may be performed with citrate buffer pH 6.0

Background Information

SERPINA6, also known as corticosteroid-binding globulin or CBG, belongs to the serpin family of serine protease inhibitors, and is mainly secreted by the liver. It is an alpha-globulin protein with corticosteroid-binding properties, and involved in obesity and stress sensitivity. It is also the major transport protein for glucocorticoids and progestins in the blood of most vertebrates. Defects in SERPINA6 are a cause of corticosteroid-binding globulin deficiency (CBG deficiency).

Storage

Storage:

Store at -20°C. Stable for one year after shipment.

Storage Buffer:

PBS with 0.02% sodium azide and 50% glycerol, pH7.3

Aliquoting is unnecessary for -20°C storage

*** 20ul sizes contain 0.1% BSA

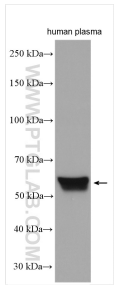
For technical support and original validation data for this product please contact:

T: 1 (888) 4PTGLAB (1-888-478-4522) (toll free in USA), or 1(312) 455-8498 (outside USA)

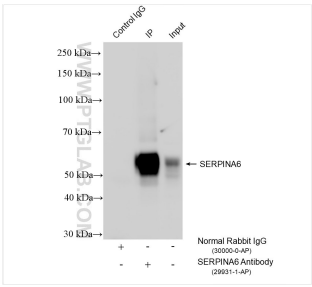
E: proteintech@ptglab.com
W: ptglab.com

This product is exclusively available under Proteintech Group brand and is not available to purchase from any other manufacturer.

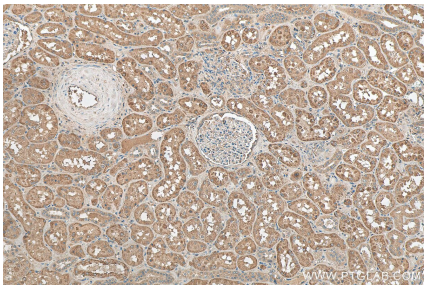
Selected Validation Data



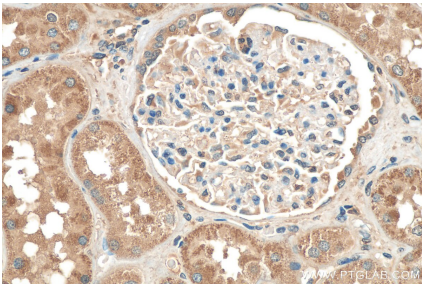
human plasma were subjected to SDS PAGE followed by western blot with 29931-1-AP (CBG/ Corticosteroid binding globulin antibody) at dilution of 1:3000 incubated at room temperature for 1.5 hours.



IP result of anti-SERPINA6/CBG (IP:29931-1-AP, 4ug; Detection:29931-1-AP 1:1000) with human placenta tissue lysate 960 ug.



Immunohistochemical analysis of paraffin-embedded human kidney tissue slide using 29931-1-AP (Corticosteroid binding globulin antibody) at dilution of 1:200 (under 10x lens). Heat mediated antigen retrieval with Tris-EDTA buffer (pH 9.0).



Immunohistochemical analysis of paraffin-embedded human kidney tissue slide using 29931-1-AP (Corticosteroid binding globulin antibody) at dilution of 1:200 (under 40x lens). Heat mediated antigen retrieval with Tris-EDTA buffer (pH 9.0).