

For Research Use Only

GPR179 Polyclonal antibody

Catalog Number: 29934-1-AP



Basic Information

Catalog Number: 29934-1-AP	GenBank Accession Number: NM_001004334.3	Purification Method: Antigen affinity purification
Size: 150ul , Concentration: 900 µg/ml by Nanodrop;	GeneID (NCBI): 440435	Recommended Dilutions: WB 1:1000-1:6000 IHC 1:250-1:1000 IF 1:50-1:500
Source: Rabbit	Full Name: G protein-coupled receptor 179	
Isotype: IgG	Calculated MW: 257 kDa	
Immunogen Catalog Number: AG32180	Observed MW: 260-270 kDa	

Applications

Tested Applications:

IF, IHC, WB, ELISA

Species Specificity:

Human, mouse

Note-IHC: suggested antigen retrieval with TE buffer pH 9.0; (*) Alternatively, antigen retrieval may be performed with citrate buffer pH 6.0

Positive Controls:

WB : HeLa cells,

IHC : mouse liver tissue,

IF : mouse eye tissue,

Background Information

GPR179 (Probable G-protein coupled receptor 179) belongs to the glutamate receptor subfamily of GPCRs, which is involved in signal transduction through retinal depolarizing bipolar cells. The protein has an EGF-like calcium binding domain and a seven transmembrane domain in the N-terminal region of the protein. Mutations in this gene are associated with congenital stationary night blindness type 1E. GPR179 is expressed in retinal bipolar cells and upregulated in rd1 mice retina with Pde6b mutations (PubMed: 22325361, PubMed: 22325362).

Storage

Storage:

Store at -20°C. Stable for one year after shipment.

Storage Buffer:

PBS with 0.02% sodium azide and 50% glycerol pH 7.3.

Aliquoting is unnecessary for -20°C storage

*** 20ul sizes contain 0.1% BSA

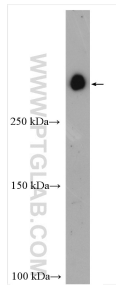
For technical support and original validation data for this product please contact:

T: 1 (888) 4PTGLAB (1-888-478-4522) (toll free in USA), or 1(312) 455-8498 (outside USA)

E: proteintech@ptglab.com
W: ptglab.com

This product is exclusively available under Proteintech Group brand and is not available to purchase from any other manufacturer.

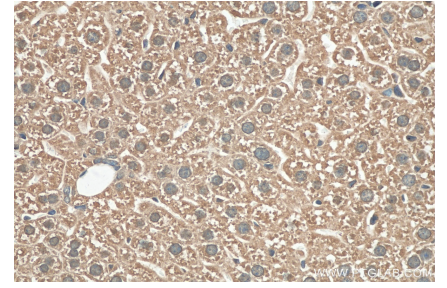
Selected Validation Data



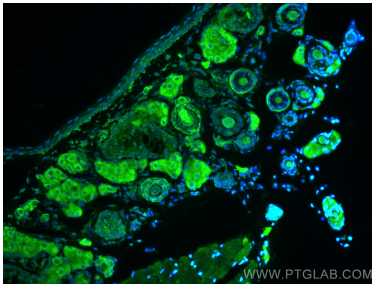
HeLa cells were subjected to SDS PAGE followed by western blot with 29934-1-AP (GPR179 antibody) at dilution of 1:3000 incubated at room temperature for 1.5 hours.



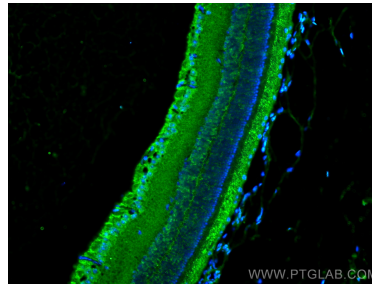
Immunohistochemical analysis of paraffin-embedded mouse liver tissue slide using 29934-1-AP (GPR179 antibody) at dilution of 1:500 (under 10x lens). Heat mediated antigen retrieval with Tris-EDTA buffer (pH 9.0).



Immunohistochemical analysis of paraffin-embedded mouse liver tissue slide using 29934-1-AP (GPR179 antibody) at dilution of 1:500 (under 40x lens). Heat mediated antigen retrieval with Tris-EDTA buffer (pH 9.0).



Immunofluorescent analysis of (4% PFA) fixed mouse eye tissue using GPR179 antibody (29934-1-AP) at dilution of 1:200 and CoraLite®488-Conjugated AffiniPure Goat Anti-Rabbit IgG(H+L).



Immunofluorescent analysis of (4% PFA) fixed mouse eye tissue using GPR179 antibody (29934-1-AP) at dilution of 1:200 and CoraLite®488-Conjugated AffiniPure Goat Anti-Rabbit IgG(H+L).