

For Research Use Only

# GPR179 Polyclonal antibody, PBS Only

Catalog Number: 29934-1-PBS



## Basic Information

**Catalog Number:**

29934-1-PBS

**Size:**

100ug, Concentration: 1 mg/ml by Nanodrop;

**Source:**

Rabbit

**Isotype:**

IgG

**Immunogen Catalog Number:**

AG32180

**GenBank Accession Number:**

NM\_001004334.3

**GeneID (NCBI):**

440435

**UNIPROT ID:**

Q6PRD1

**Full Name:**

G protein-coupled receptor 179

**Calculated MW:**

257 kDa

**Observed MW:**

260-270 kDa

**Purification Method:**

Antigen affinity purification

## Applications

**Tested Applications:**

WB, IHC, Indirect ELISA

**Species Specificity:**

human, mouse

## Background Information

GPR179 (Probable G-protein coupled receptor 179) belongs to the glutamate receptor subfamily of GPCRs, which is involved in signal transduction through retinal depolarizing bipolar cells. The protein has an EGF-like calcium binding domain and a seven transmembrane domain in the N-terminal region of the protein. Mutations in this gene are associated with congenital stationary night blindness type 1E. GPR179 is expressed in retinal bipolar cells and upregulated in rd1 mice retina with Pde6b mutations (PubMed: 22325361, PubMed: 22325362).

## Storage

**Storage:**

Store at -80°C.

**Storage Buffer:**

PBS Only

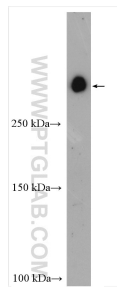
For technical support and original validation data for this product please contact:

T: 1 (888) 4PTGLAB (1-888-478-4522) (toll free in USA), or 1(312) 455-8498 (outside USA)

E: [proteintech@ptglab.com](mailto:proteintech@ptglab.com)  
W: [ptglab.com](http://ptglab.com)

**This product is exclusively available under Proteintech Group brand and is not available to purchase from any other manufacturer.**

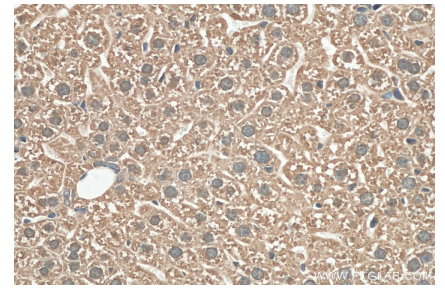
## Selected Validation Data



HeLa cells were subjected to SDS PAGE followed by western blot with 29934-1-AP (GPR179 antibody) at dilution of 1:3000 incubated at room temperature for 1.5 hours. This data was developed using the same antibody clone with 29934-1-PBS in a different storage buffer formulation.



Immunohistochemical analysis of paraffin-embedded mouse liver tissue slide using 29934-1-AP (GPR179 antibody) at dilution of 1:500 (under 10x lens). Heat mediated antigen retrieval with Tris-EDTA buffer (pH 9.0). This data was developed using the same antibody clone with 29934-1-PBS in a different storage buffer formulation.



Immunohistochemical analysis of paraffin-embedded mouse liver tissue slide using 29934-1-AP (GPR179 antibody) at dilution of 1:500 (under 40x lens). Heat mediated antigen retrieval with Tris-EDTA buffer (pH 9.0). This data was developed using the same antibody clone with 29934-1-PBS in a different storage buffer formulation.