

For Research Use Only

DOCK5 Polyclonal antibody

Catalog Number: 29938-1-AP

Featured Product



Basic Information

Catalog Number:

29938-1-AP

Size:

150ul, Concentration: 700 ug/ml by Nanodrop;

Source:

Rabbit

Isotype:

IgG

Immunogen Catalog Number:

AG32193

GenBank Accession Number:

BC137175

GeneID (NCBI):

80005

UNIPROT ID:

Q9H7D0

Full Name:

dedicator of cytokinesis 5

Calculated MW:

1870 aa, 215 kDa

Observed MW:

190 kDa

Purification Method:

Antigen affinity purification

Recommended Dilutions:

WB 1:500-1:3000

IP 0.5-4.0 ug for 1.0-3.0 mg of total protein lysate

IHC 1:50-1:500

IF/ICC 1:50-1:500

Applications

Tested Applications:

WB, IHC, IF/ICC, IP, ELISA

Species Specificity:

human, mouse, rat

Note-IHC: suggested antigen retrieval with TE buffer pH 9.0; (*) Alternatively, antigen retrieval may be performed with citrate buffer pH 6.0

Positive Controls:

WB: LNCaP cells, Jurkat cells, A549 cells, DU 145 cells, NIH3T3 cells, rat brain tissue, NIH/3T3 cells, mouse brain tissue

IP: DU 145 cells,

IHC: mouse kidney tissue, human intrahepatic cholangiocarcinoma tissue

IF/ICC: U2OS cells,

Background Information

DOCK5 is a member of the dedicator of cytokinesis protein family. Members of this family act as guanine nucleotide exchange factors for small Rho family G proteins. DOCK5 is thought to associate with adaptors CRK and CRKL, and function in regulation of intestinal epithelial cell spreading and migration on collagen IV.

Storage

Storage:

Store at -20°C. Stable for one year after shipment.

Storage Buffer:

PBS with 0.02% sodium azide and 50% glycerol pH 7.3.

Aliquoting is unnecessary for -20°C storage

*** 20ul sizes contain 0.1% BSA

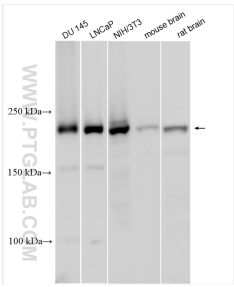
For technical support and original validation data for this product please contact:

T: 1 (888) 4PTGLAB (1-888-478-4522) (toll free in USA), or 1(312) 455-8498 (outside USA)

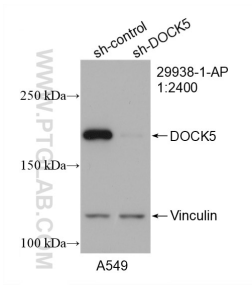
E: proteintech@ptglab.com
W: ptglab.com

This product is exclusively available under Proteintech Group brand and is not available to purchase from any other manufacturer.

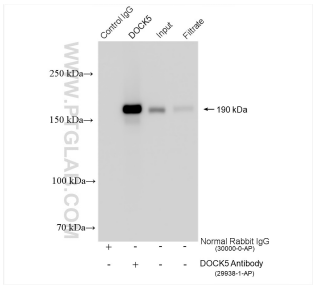
Selected Validation Data



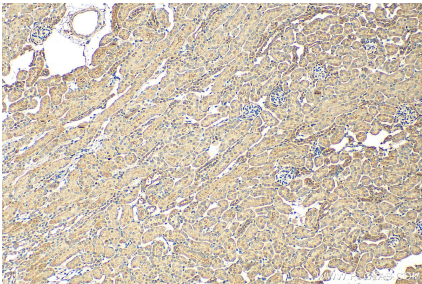
Various lysates were subjected to SDS PAGE followed by western blot with 29938-1-AP (DOCK5 antibody) at dilution of 1:1500 incubated at room temperature for 1.5 hours.



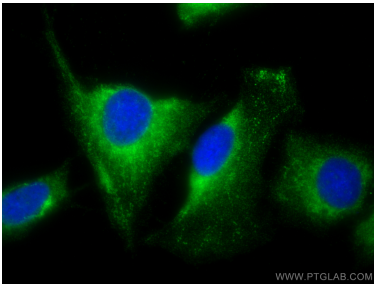
WB result of DOCK5 antibody (29938-1-AP; 1:2400; incubated at room temperature for 1.5 hours) with sh-Control and sh-DOCK5 transfected A549 cells.



IP result of anti-DOCK5 (IP:29938-1-AP, 4ug; Detection:29938-1-AP 1:2000) with DU 145 cells lysate 1280 ug.



Immunohistochemical analysis of paraffin-embedded mouse kidney tissue slide using 29938-1-AP (DOCK5 antibody) at dilution of 1:200 (under 10x lens). Heat mediated antigen retrieval with Tris-EDTA buffer (pH 9.0).



Immunofluorescent analysis of (-20°C Methanol) fixed U2OS cells using DOCK5 antibody (29938-1-AP) at dilution of 1:200 and CoraLite®488-Conjugated AffiniPure Goat Anti-Rabbit IgG(H+L).