

For Research Use Only

# DOCK5 Polyclonal antibody, PBS Only

Catalog Number: 29938-1-PBS

Featured Product



## Basic Information

**Catalog Number:**

29938-1-PBS

**Size:**

100ug, Concentration: 1 mg/ml by Nanodrop;

**Source:**

Rabbit

**Isotype:**

IgG

**Immunogen Catalog Number:**

AG32193

**GenBank Accession Number:**

BC137175

**GeneID (NCBI):**

80005

**UNIPROT ID:**

Q9H7D0

**Full Name:**

dedicator of cytokinesis 5

**Calculated MW:**

1870 aa, 215 kDa

**Observed MW:**

190 kDa

**Purification Method:**

Antigen affinity purification

## Applications

**Tested Applications:**

WB, IHC, IF/ICC, IP, Indirect ELISA

**Species Specificity:**

human, mouse, rat

## Background Information

DOCK5 is a member of the dedicator of cytokinesis protein family. Members of this family act as guanine nucleotide exchange factors for small Rho family G proteins. DOCK5 is thought to associate with adaptors CRK and CRKL, and function in regulation of intestinal epithelial cell spreading and migration on collagen IV.

## Storage

**Storage:**

Store at -80°C.

**Storage Buffer:**

PBS Only

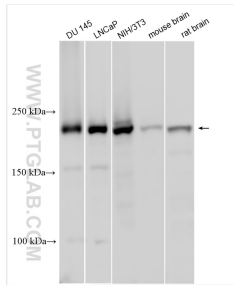
For technical support and original validation data for this product please contact:

T: 1 (888) 4PTGLAB (1-888-478-4522) (toll free in USA), or 1(312) 455-8498 (outside USA)

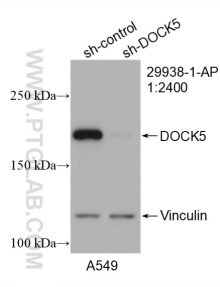
E: [proteintech@ptglab.com](mailto:proteintech@ptglab.com)  
W: [ptglab.com](http://ptglab.com)

This product is exclusively available under Proteintech Group brand and is not available to purchase from any other manufacturer.

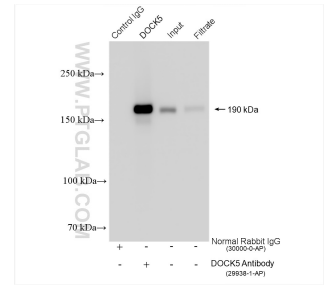
## Selected Validation Data



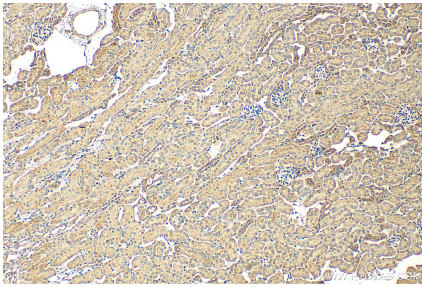
Various lysates were subjected to SDS PAGE followed by western blot with 29938-1-AP (DOCK5 antibody) at dilution of 1:1500 incubated at room temperature for 1.5 hours. This data was developed using the same antibody clone with 29938-1-PBS in a different storage buffer formulation.



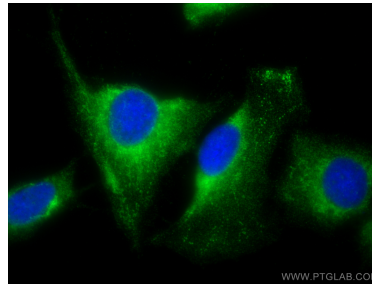
WB result of DOCK5 antibody (29938-1-AP; 1:2400; incubated at room temperature for 1.5 hours) with sh-Control and sh-DOCK5 transfected A549 cells. This data was developed using the same antibody clone with 29938-1-PBS in a different storage buffer formulation.



IP result of anti-DOCK5 (IP:29938-1-AP, 4ug; Detection:29938-1-AP 1:2000) with DU 145 cells lysate 1280 ug. This data was developed using the same antibody clone with 29938-1-PBS in a different storage buffer formulation.



Immunohistochemical analysis of paraffin-embedded mouse kidney tissue slide using 29938-1-AP (DOCK5 antibody) at dilution of 1:200 (under 10x lens). Heat mediated antigen retrieval with Tris-EDTA buffer (pH 9.0). This data was developed using the same antibody clone with 29938-1-PBS in a different storage buffer formulation.



Immunofluorescent analysis of (-20°C Methanol) fixed U2OS cells using DOCK5 antibody (29938-1-AP) at dilution of 1:200 and CoraLite@488-Conjugated AffiniPure Goat Anti-Rabbit IgG(H+L). This data was developed using the same antibody clone with 29938-1-PBS in a different storage buffer formulation.