

For Research Use Only

# IREB2 Polyclonal antibody

Catalog Number: 29976-1-AP



## Basic Information

<b>Catalog Number:</b> 29976-1-AP	<b>GenBank Accession Number:</b> BC017880	<b>Purification Method:</b> Antigen affinity purification
<b>Size:</b> 150ul , Concentration: 600 µg/ml by Nanodrop;	<b>GeneID (NCBI):</b> 3658	<b>Recommended Dilutions:</b> WB 1:1000-1:8000 IHC 1:200-1:800
<b>Source:</b> Rabbit	<b>Full Name:</b> iron-responsive element binding protein 2	
<b>Isotype:</b> IgG	<b>Calculated MW:</b> 105 kDa	
<b>Immunogen Catalog Number:</b> AG32233	<b>Observed MW:</b> 105 kDa	

## Applications

### Tested Applications:

IHC, WB, ELISA

### Species Specificity:

Human, mouse

**Note-IHC: suggested antigen retrieval with TE buffer pH 9.0; (\*) Alternatively, antigen retrieval may be performed with citrate buffer pH 6.0**

### Positive Controls:

WB : mouse liver tissue,

IHC : human colon cancer tissue,

## Background Information

IREB2 is an RNA-binding protein that acts to regulate iron levels in the cells by regulating the translation and stability of mRNAs that affect iron homeostasis under conditions when iron is depleted. When iron levels are low, this protein binds to iron-responsive elements (IRES), stem-loop structures located either in the 5' or 3' UTRs. Binding to the 5' UTR represses translation, while binding to the 3' UTR inhibits mRNA degradation. When iron is found in the cell, this protein is degraded in a F-box and leucine rich repeat protein 5-dependent manner.

## Storage

### Storage:

Store at -20°C. Stable for one year after shipment.

### Storage Buffer:

PBS with 0.02% sodium azide and 50% glycerol pH 7.3.

Aliquoting is unnecessary for -20°C storage

\*\*\* 20ul sizes contain 0.1% BSA

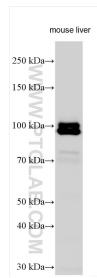
For technical support and original validation data for this product please contact:

T: 1 (888) 4PTGLAB (1-888-478-4522) (toll free in USA), or 1(312) 455-8498 (outside USA)

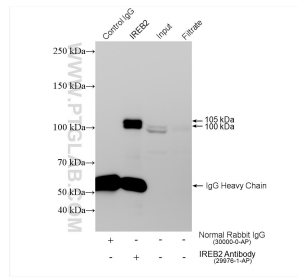
E: [proteintech@ptglab.com](mailto:proteintech@ptglab.com)  
W: [ptglab.com](http://ptglab.com)

**This product is exclusively available under Proteintech Group brand and is not available to purchase from any other manufacturer.**

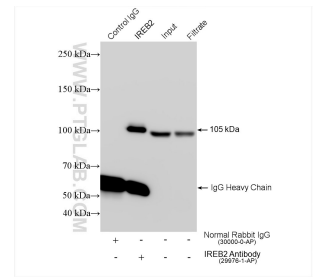
## Selected Validation Data



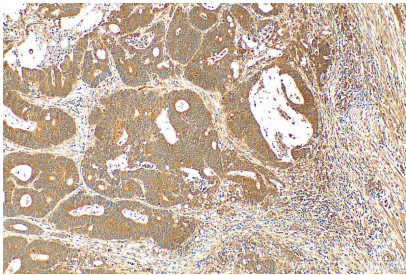
Various lysates were subjected to SDS PAGE followed by western blot with 29976-1-AP (IREB2 antibody) at dilution of 1:4000 incubated at room temperature for 1.5 hours.



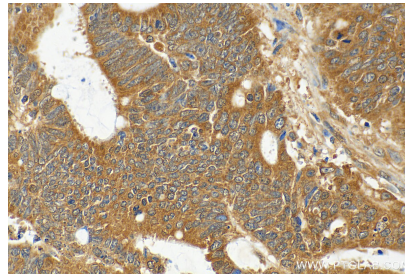
IP result of anti-IREB2(IP:29976-1-AP, 4ug; Detection:29976-1-AP 1:1000) with A549 cells lysate 920 ug.



IP result of anti-IREB2(IP:29976-1-AP, 4ug; Detection:29976-1-AP 1:5000) with mouse liver tissue lysate 1840 ug.



Immunohistochemical analysis of paraffin-embedded human colon cancer tissue slide using 29976-1-AP (IREB2 antibody) at dilution of 1:400 (under 10x lens). Heat mediated antigen retrieval with Tris-EDTA buffer (pH 9.0).



Immunohistochemical analysis of paraffin-embedded human colon cancer tissue slide using 29976-1-AP (IREB2 antibody) at dilution of 1:400 (under 40x lens). Heat mediated antigen retrieval with Tris-EDTA buffer (pH 9.0).