

For Research Use Only

KDM4A Polyclonal antibody

Catalog Number: 29977-1-AP



Basic Information

Catalog Number: 29977-1-AP	GenBank Accession Number: BC002558	Purification Method: Antigen affinity purification
Size: 150ul , Concentration: 1000 µg/ml by Nanodrop;	GeneID (NCBI): 9682	Recommended Dilutions: WB 1:1000-1:6000 IP 0.5-4.0 ug for IP and 1:500-1:3000 for WB
Source: Rabbit	Full Name: lysine (K)-specific demethylase 4A	
Isotype: IgG	Calculated MW: 1064 aa, 121 kDa	
Immunogen Catalog Number: AG31992	Observed MW: 130-150 kDa	

Applications

Tested Applications: FC, IP, WB, ELISA	Positive Controls: WB : A549 cells, mouse lung tissue, MCF-7 cells, MDA-MB-231 cells, NCI-H1299 cells IP : MCF-7 cells, A549 cells
Species Specificity: Human, mouse	

Background Information

KDM4A also named as JHDM3A, JMJD2, or KIAA0677 is a 1066 amino acid protein, which contains one JmjC domain, two Tudor domains and two PHD-type zinc fingers. KDM4A localizes in nucleus and belongs to the JHDM3 histone demethylase family. KDM4A is histone de-methylase that specifically demethylates Lys 9 and Lys 36 residues of Histone H3, thereby playing a central role in histone code. JMJD2A demethylation of lysine residues will generate formaldehyde and succinate. KDM4A also participates in transcriptional repression of ASCL2 and E2F-responsive promoters via the recruitment of histone deacetylases and NCOR1, respectively. JMJD2A is a ubiquitously expressed nuclear protein. KDM4A exists as two isoforms. The short isoform of KDM4A in which the N-terminal demethylase domains has been deleted. The molecular weight of short isoform is 55Da.

Storage

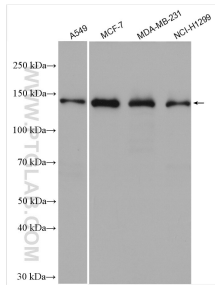
Storage:
Store at -20°C. Stable for one year after shipment.
Storage Buffer:
PBS with 0.02% sodium azide and 50% glycerol pH 7.3.
Aliquoting is unnecessary for -20°C storage

*** 20ul sizes contain 0.1% BSA

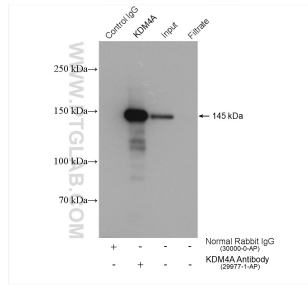
For technical support and original validation data for this product please contact:
T: 1 (888) 4PTGLAB (1-888-478-4522) (toll free in USA), or 1(312) 455-8498 (outside USA)
E: proteintech@ptglab.com
W: ptglab.com

This product is exclusively available under Proteintech Group brand and is not available to purchase from any other manufacturer.

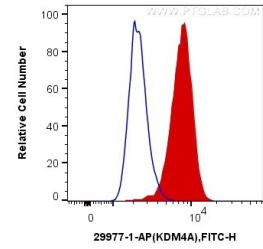
Selected Validation Data



Various lysates were subjected to SDS PAGE followed by western blot with 29977-1-AP (KDM4A antibody) at dilution of 1:3000 incubated at room temperature for 1.5 hours.



IP result of anti-KDM4A (IP:29977-1-AP, 4ug; Detection:29977-1-AP 1:1500) with MCF-7 cells lysate 2120 ug.



1X10⁶ A549 cells were intracellularly stained with 0.4 ug Anti-Human KDM4A (29977-1-AP) and CoraLite@488-Conjugated AffiniPure Goat Anti-Rabbit IgG(H+L) at dilution 1:1000 (red), or 0.4 ug Control Antibody. Cells were fixed and permeabilized with Transcription Factor Staining Buffer Kit (PF00011).