

For Research Use Only

MAP3K10 Polyclonal antibody

Catalog Number: 29985-1-AP



Basic Information

Catalog Number: 29985-1-AP	GenBank Accession Number: NM_002446	Purification Method: Antigen affinity purification
Size: 150ul , Concentration: 500 µg/ml by Nanodrop;	GeneID (NCBI): 4294	Recommended Dilutions: WB 1:20000-1:100000
Source: Rabbit	Full Name: mitogen-activated protein kinase kinase kinase 10	
Isotype: IgG	Calculated MW: 104KD	
Immunogen Catalog Number: AG32419	Observed MW: 104-115 kDa	

Applications

Tested Applications: WB, ELISA	Positive Controls: WB : mouse skeletal muscle tissue, rat skeletal muscle tissue
Species Specificity: Human, mouse, rat	

Background Information

MAP3K10, also named as MLK2 and MST, belongs to the protein kinase superfamily, STE Ser/Thr protein kinase family and MAP kinase kinase kinase subfamily. MAP3K10 activates the JUN N-terminal pathway. MAP3K10 catalyzes the reaction: ATP + a protein = ADP + a phosphoprotein. MAP3K10 can be detected 104-115 kDa by phosphorylation (PMID: 23178452).

Storage

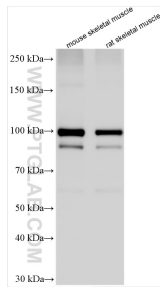
Storage:
Store at -20°C. Stable for one year after shipment.
Storage Buffer:
PBS with 0.02% sodium azide and 50% glycerol pH 7.3.
Aliquoting is unnecessary for -20°C storage

*** 20ul sizes contain 0.1% BSA

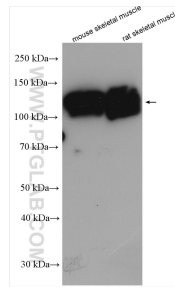
For technical support and original validation data for this product please contact:
T: 1 (888) 4PTGLAB (1-888-478-4522) (toll free in USA), or 1(312) 455-8498 (outside USA) E: proteintech@ptglab.com W: ptglab.com

This product is exclusively available under Proteintech Group brand and is not available to purchase from any other manufacturer.

Selected Validation Data



Various lysates were subjected to SDS PAGE followed by western blot with 29985-1-AP (MAP3K10 antibody) at dilution of 1:50000 incubated at room temperature for 1.5 hours.



Various lysates were subjected to SDS PAGE followed by western blot with 29985-1-AP (MAP3K10 antibody) at dilution of 1:5000 incubated at room temperature for 1.5 hours.