

For Research Use Only

# GPR37 Polyclonal antibody

Catalog Number: 29989-1-AP



## Basic Information

<b>Catalog Number:</b> 29989-1-AP	<b>GenBank Accession Number:</b> BC040007	<b>Purification Method:</b> Antigen affinity purification
<b>Size:</b> 150ul , Concentration: 1000 µg/ml by Nanodrop;	<b>GeneID (NCBI):</b> 2861	<b>Recommended Dilutions:</b> WB 1:1000-1:8000
<b>Source:</b> Rabbit	<b>Full Name:</b> G protein-coupled receptor 37 (endothelin receptor type B-like)	
<b>Isotype:</b> IgG	<b>Calculated MW:</b> 67 kDa	
<b>Immunogen Catalog Number:</b> AG32431	<b>Observed MW:</b> 60 kDa	

## Applications

<b>Tested Applications:</b> WB, ELISA	<b>Positive Controls:</b> WB : mouse brain tissue, mouse cerebellum tissue, rat brain tissue
<b>Species Specificity:</b> Human, mouse, rat	

## Background Information

The orphan G protein-coupled receptor GPR37, also known as PAELR (parkin-associated endothelin receptor-like receptor) or ETBR-LP-1 (endothelin B receptor-like protein 1), is a 613 aa, multi-pass membrane protein predominantly expressed in the brain. It is a substrate of parkin (PARK2). When overexpressed in cells, GPR37 tends to become insoluble, unfolded, and ubiquitinated in vivo. Accumulation of the unfolded protein may lead to dopaminergic neuronal death in juvenile Parkinson disease (JPD).

## Storage

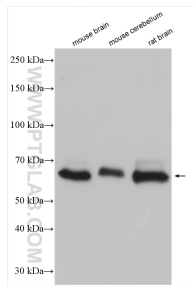
**Storage:**  
Store at -20°C. Stable for one year after shipment.  
**Storage Buffer:**  
PBS with 0.02% sodium azide and 50% glycerol pH 7.3.  
Aliquoting is unnecessary for -20°C storage

\*\*\* 20ul sizes contain 0.1% BSA

For technical support and original validation data for this product please contact:  
T: 1 (888) 4PTGLAB (1-888-478-4522) (toll free in USA), or 1(312) 455-8498 (outside USA)  
E: proteintech@ptglab.com  
W: ptglab.com

This product is exclusively available under Proteintech Group brand and is not available to purchase from any other manufacturer.

## Selected Validation Data



Various lysates were subjected to SDS PAGE followed by western blot with 29989-1-AP (GPR37 antibody) at dilution of 1:4000 incubated at room temperature for 1.5 hours.