

For Research Use Only

# MBD1 Polyclonal antibody

Catalog Number: 29998-1-AP



## Basic Information

<b>Catalog Number:</b> 29998-1-AP	<b>GenBank Accession Number:</b> NM_015846	<b>Purification Method:</b> Antigen affinity purification
<b>Size:</b> 150ul , Concentration: 300 µg/ml by Nanodrop;	<b>GeneID (NCBI):</b> 4152	<b>Recommended Dilutions:</b> WB 1:1000-1:8000
<b>Source:</b> Rabbit	<b>Full Name:</b> methyl-CpG binding domain protein 1	
<b>Isotype:</b> IgG	<b>Calculated MW:</b> 67KD	
<b>Immunogen Catalog Number:</b> AG31424	<b>Observed MW:</b> 70-80 kDa	

## Applications

<b>Tested Applications:</b> WB, ELISA	<b>Positive Controls:</b> WB : HeLa cells, Jurkat cells
<b>Species Specificity:</b> Human	

## Background Information

MBD1, also known as RFT, PCM1, CXXC3, is a member of a family of nuclear proteins related by the presence of a methyl-CpG binding domain (MBD). MBD1 is a transcriptional repressor that binds CpG islands in promoters where the DNA is methylated at position 5 of cytosine within CpG dinucleotides. MBD1 acts as a transcriptional repressor and plays a role in gene silencing by recruiting AFT7IP, which in turn recruits factors such as the histone methyltransferase SETDB1. Five transcript variants of the MBD1 are generated by alternative splicing resulting in protein isoforms that contain one MBD domain, two to three cysteine-rich (CXXC) domains, and some differences in the COOH terminus. Isoform 1 and isoform 2 can repress transcription from unmethylated promoters (PMID: 12665582, 14610093, 16757475).

## Storage

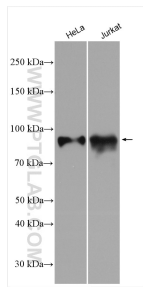
**Storage:**  
Store at -20°C. Stable for one year after shipment.  
**Storage Buffer:**  
PBS with 0.02% sodium azide and 50% glycerol pH 7.3.  
Aliquoting is unnecessary for -20°C storage

\*\*\* 20ul sizes contain 0.1% BSA

For technical support and original validation data for this product please contact:  
T: 1 (888) 4PTGLAB (1-888-478-4522) (toll free in USA), or 1(312) 455-8498 (outside USA) E: proteintech@ptglab.com W: ptglab.com

This product is exclusively available under Proteintech Group brand and is not available to purchase from any other manufacturer.

## Selected Validation Data



Various lysates were subjected to SDS PAGE followed by western blot with 29998-1-AP (MBD1 antibody) at dilution of 1:4000 incubated at room temperature for 1.5 hours.