

For Research Use Only

# MBD1 Polyclonal antibody, PBS Only

Catalog Number:29998-1-PBS



## Basic Information

<b>Catalog Number:</b> 29998-1-PBS	<b>GenBank Accession Number:</b> NM_015846	<b>Purification Method:</b> Antigen affinity purification
<b>Size:</b> 100ug , Concentration: 1 mg/ml by Nanodrop;	<b>GeneID (NCBI):</b> 4152	
<b>Source:</b> Rabbit	<b>UNIPROT ID:</b> Q9UIS9	
<b>Isotype:</b> IgG	<b>Full Name:</b> methyl-CpG binding domain protein 1	
<b>Immunogen Catalog Number:</b> AG31424	<b>Calculated MW:</b> 67KD	
	<b>Observed MW:</b> 70-80 kDa	

## Applications

**Tested Applications:**  
WB, IF/ICC, Indirect ELISA

**Species Specificity:**  
human

## Background Information

MBD1, also known as RFT, PCM1, CXXC3, is a member of a family of nuclear proteins related by the presence of a methyl-CpG binding domain (MBD). MBD1 is a transcriptional repressor that binds CpG islands in promoters where the DNA is methylated at position 5 of cytosine within CpG dinucleotides. MBD1 acts as a transcriptional repressor and plays a role in gene silencing by recruiting AFT7IP, which in turn recruits factors such as the histone methyltransferase SETDB1. Five transcript variants of the MBD1 are generated by alternative splicing resulting in protein isoforms that contain one MBD domain, two to three cysteine-rich (CXXC) domains, and some differences in the COOH terminus. Isoform 1 and isoform 2 can repress transcription from unmethylated promoters (PMID: 12665582, 14610093, 16757475).

## Storage

**Storage:**  
Store at -80°C.

**Storage Buffer:**  
PBS Only

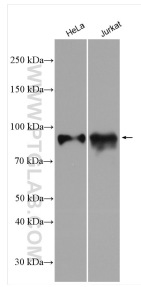
For technical support and original validation data for this product please contact:

T: 1 (888) 4PTGLAB (1-888-478-4522) (toll free in USA), or 1(312) 455-8498 (outside USA)

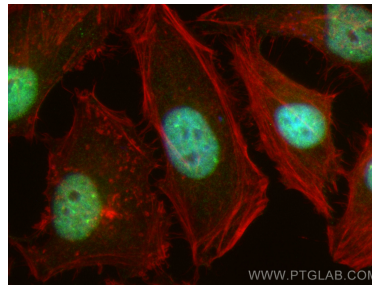
E: [proteintech@ptglab.com](mailto:proteintech@ptglab.com)  
W: [ptglab.com](http://ptglab.com)

**This product is exclusively available under Proteintech Group brand and is not available to purchase from any other manufacturer.**

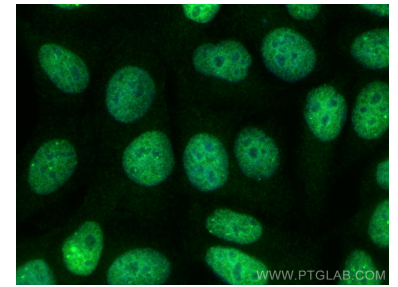
## Selected Validation Data



Various lysates were subjected to SDS PAGE followed by western blot with 29998-1-AP (MBD1 antibody) at dilution of 1:4000 incubated at room temperature for 1.5 hours. This data was developed using the same antibody clone with 29998-1-PBS in a different storage buffer formulation.



Immunofluorescent analysis of (4% PFA) fixed HeLa cells using MBD1 antibody (29998-1-AP) at dilution of 1:800 and Multi-rAb CoraLite® Plus 488-Goat Anti-Rabbit Recombinant Secondary Antibody (H+L) (RGAR002), CL594-phalloidin (red). This data was developed using the same antibody clone with 29998-1-PBS in a different storage buffer formulation.



Immunofluorescent analysis of (4% PFA) fixed MCF-7 cells using MBD1 antibody (29998-1-AP) at dilution of 1:800 and Multi-rAb CoraLite® Plus 488-Goat Anti-Rabbit Recombinant Secondary Antibody (H+L) (RGAR002). This data was developed using the same antibody clone with 29998-1-PBS in a different storage buffer formulation.