

For Research Use Only

# ITGBL1 Polyclonal antibody

Catalog Number: 30010-1-AP



## Basic Information

**Catalog Number:**

30010-1-AP

**Size:**

150ul , Concentration: 550 ug/ml by Nanodrop;

**Source:**

Rabbit

**Isotype:**

IgG

**Immunogen Catalog Number:**

AG31989

**GenBank Accession Number:**

BC036788

**GeneID (NCBI):**

9358

**UNIPROT ID:**

O95965

**Full Name:**

integrin, beta-like 1 (with EGF-like repeat domains)

**Calculated MW:**

494 aa, 54 kDa

**Observed MW:**

54 kDa

**Purification Method:**

Antigen affinity purification

**Recommended Dilutions:**

WB 1:500-1:2000

## Applications

**Tested Applications:**

WB, ELISA

**Species Specificity:**

Human

**Positive Controls:**

WB : HeLa cells, SKOV-3 cells

## Background Information

Integrin beta-like protein 1 (ITGBL1), also named as TIED or OSCP, is a secreted protein that contains ten tandem EGF-like repeats strikingly similar to those found in the cysteine-rich "stalk-like" structure of integrin beta subunits (PMID: 10051402). ITGBL1 participates in the regulation of fibrogenesis via interactions with transforming growth factor beta 1 (PMID: 28262670). ITGBL1 is also involved in the development and metastasis of many tumors (PMID: 32211321; 29772438; 26060017; 31190876).

## Storage

**Storage:**

Store at -20°C. Stable for one year after shipment.

**Storage Buffer:**

PBS with 0.02% sodium azide and 50% glycerol pH 7.3.

Aliquoting is unnecessary for -20°C storage

\*\*\* 20ul sizes contain 0.1% BSA

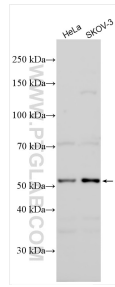
For technical support and original validation data for this product please contact:

T: 1 (888) 4PTGLAB (1-888-478-4522) (toll free in USA), or 1(312) 455-8498 (outside USA)

E: [proteintech@ptglab.com](mailto:proteintech@ptglab.com)  
W: [ptglab.com](http://ptglab.com)

This product is exclusively available under Proteintech Group brand and is not available to purchase from any other manufacturer.

## Selected Validation Data



Various lysates were subjected to SDS PAGE followed by western blot with 30010-1-AP (ITGBL1 antibody) at dilution of 1:1000 incubated at room temperature for 1.5 hours.