

For Research Use Only

# ITGBL1 Polyclonal antibody, PBS Only

Catalog Number:30010-1-PBS



## Basic Information

<b>Catalog Number:</b> 30010-1-PBS	<b>GenBank Accession Number:</b> BC036788	<b>Purification Method:</b> Antigen affinity purification
<b>Size:</b> 100ug, Concentration: 1 mg/ml by Nanodrop;	<b>GeneID (NCBI):</b> 9358	
<b>Source:</b> Rabbit	<b>UNIPROT ID:</b> O95965	
<b>Isotype:</b> IgG	<b>Full Name:</b> integrin, beta-like 1 (with EGF-like repeat domains)	
<b>Immunogen Catalog Number:</b> AG31989	<b>Calculated MW:</b> 494 aa, 54 kDa	
	<b>Observed MW:</b> 50 kDa	

## Applications

**Tested Applications:**  
WB, Indirect ELISA

**Species Specificity:**  
human

## Background Information

Integrin beta-like protein 1 (ITGBL1), also named as TIED or OSCP, is a secreted protein that contains ten tandem EGF-like repeats strikingly similar to those found in the cysteine-rich "stalk-like" structure of integrin beta subunits (PMID: 10051402). ITGBL1 participates in the regulation of fibrogenesis via interactions with transforming growth factor beta 1 (PMID: 28262670). ITGBL1 is also involved in the development and metastasis of many tumors (PMID: 32211321; 29772438; 26060017; 31190876).

## Storage

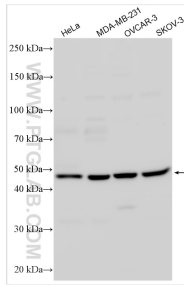
**Storage:**  
Store at -80°C.

**Storage Buffer:**  
PBS only, pH7.3

For technical support and original validation data for this product please contact:  
T: 1 (888) 4PTGLAB (1-888-478-4522) (toll free in USA), or 1(312) 455-8498 (outside USA)      E: proteintech@ptglab.com  
W: ptglab.com

**This product is exclusively available under Proteintech Group brand and is not available to purchase from any other manufacturer.**

## Selected Validation Data



Various lysates were subjected to SDS PAGE followed by western blot with 30010-1-AP (ITGB1 antibody) at dilution of 1:4000 incubated at room temperature for 1.5 hours. This data was developed using the same antibody clone with 30010-1-PBS in a different storage buffer formulation.