

For Research Use Only

# ATP2B1 Polyclonal antibody

Catalog Number: 30035-1-AP



## Basic Information

<b>Catalog Number:</b> 30035-1-AP	<b>GenBank Accession Number:</b> NM_001001323.1	<b>Purification Method:</b> Antigen affinity purification
<b>Size:</b> 150ul , Concentration: 1000 µg/ml by Nanodrop;	<b>GeneID (NCBI):</b> 490	<b>Recommended Dilutions:</b> WB 1:5000-1:50000 IHC 1:500-1:2000
<b>Source:</b> Rabbit	<b>Full Name:</b> ATPase, Ca <sup>++</sup> transporting, plasma membrane 1	
<b>Isotype:</b> IgG	<b>Calculated MW:</b> 135 kDa	
<b>Immunogen Catalog Number:</b> AG32423	<b>Observed MW:</b> 130-180 kDa	

## Applications

### Tested Applications:

IHC, WB, ELISA

### Species Specificity:

Human

**Note-IHC: suggested antigen retrieval with  
TE buffer pH 9.0; (\*) Alternatively, antigen  
retrieval may be performed with citrate  
buffer pH 6.0**

### Positive Controls:

WB : 37°C incubated mouse brain tissue,

IHC : human pancreas cancer tissue, human colon  
tissue

## Background Information

ATPase plasma membrane Ca<sup>2+</sup> transporting 1 (ATP2B1, also known as plasma membrane Ca<sup>2+</sup> pump isoform 1; PMCA1) belongs to the family of ATP-driven calmodulin-dependent Ca<sup>2+</sup> pumps that participate in the regulation of intracellular free Ca<sup>2+</sup> (PMID:35358416). The ATP2B1 contents of extracellular vesicles are increased in prostate cancer treated with enzalutamide and are negatively regulated by androgen receptors (PMID:29105980). ATP2B1 plays an important role in the prognosis of cholangiocarcinoma. Furthermore, ATP2B1 plays an important role in the prognosis of cholangiocarcinoma and can be a prognostic factor for cholangiocarcinoma (PMID:35875160).

## Storage

### Storage:

Store at -20°C. Stable for one year after shipment.

### Storage Buffer:

PBS with 0.02% sodium azide and 50% glycerol pH 7.3.

Aliquoting is unnecessary for -20°C storage

**\*\*\* 20ul sizes contain 0.1% BSA**

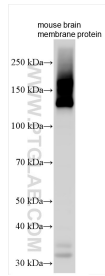
For technical support and original validation data for this product please contact:

T: 1 (888) 4PTGLAB (1-888-478-4522) (toll free  
in USA), or 1(312) 455-8498 (outside USA)

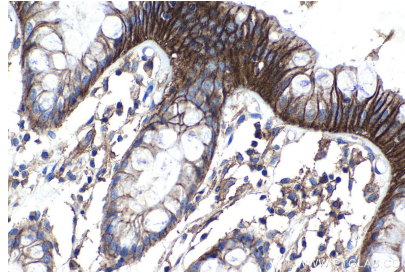
E: [proteintech@ptglab.com](mailto:proteintech@ptglab.com)  
W: [ptglab.com](http://ptglab.com)

**This product is exclusively available under Proteintech  
Group brand and is not available to purchase from any  
other manufacturer.**

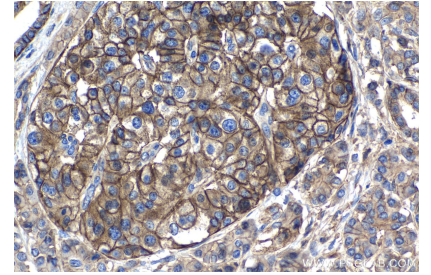
## Selected Validation Data



Various lysates were subjected to SDS PAGE followed by western blot with 30035-1-AP (ATP2B1 antibody) at dilution of 1:10000 incubated at room temperature for 1.5 hours.



Immunohistochemical analysis of paraffin-embedded human colon tissue slide using 30035-1-AP (ATP2B1 antibody) at dilution of 1:1000 (under 40x lens). Heat mediated antigen retrieval with Tris-EDTA buffer (pH 9.0).



Immunohistochemical analysis of paraffin-embedded human pancreas cancer tissue slide using 30035-1-AP (ATP2B1 antibody) at dilution of 1:1000 (under 40x lens). Heat mediated antigen retrieval with Tris-EDTA buffer (pH 9.0).