

For Research Use Only

# Collagen Type XII Polyclonal antibody, PBS Only

Catalog Number:30045-1-PBS



## Basic Information

<b>Catalog Number:</b> 30045-1-PBS	<b>GenBank Accession Number:</b> NM_004370	<b>Purification Method:</b> Antigen affinity purification
<b>Size:</b> 100ug , Concentration: 1 mg/ml by Nanodrop;	<b>GeneID (NCBI):</b> 1303	
<b>Source:</b> Rabbit	<b>UNIPROT ID:</b> Q99715	
<b>Isotype:</b> IgG	<b>Full Name:</b> collagen, type XII, alpha 1	
<b>Immunogen Catalog Number:</b> AG32602	<b>Calculated MW:</b> 333kd	
	<b>Observed MW:</b> 310-333 kDa	

## Applications

**Tested Applications:**  
WB, IF/ICC, Indirect ELISA

**Species Specificity:**  
human, mouse

## Background Information

COL12A1 (Collagen alpha-1(XII) chain), also known as COL12A1L. It is predicted to be located in the ECM. Type XII collagen interacts with type I collagen-containing fibrils, the COL1 domain could be associated with the surface of the fibrils, and the COL2 and NC3 domains may be localized in the periferibrillar matrix. The molecular weight of COL12A1 is 333 kDa.

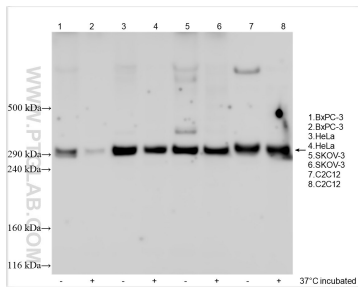
## Storage

**Storage:**  
Store at -80°C.  
**Storage Buffer:**  
PBS only, pH7.3

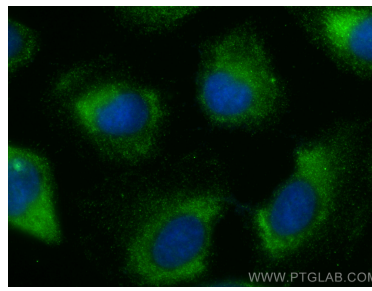
For technical support and original validation data for this product please contact:  
T: 1 (888) 4PTGLAB (1-888-478-4522) (toll free in USA), or 1(312) 455-8498 (outside USA)      E: proteintech@ptglab.com  
W: ptglab.com

**This product is exclusively available under Proteintech Group brand and is not available to purchase from any other manufacturer.**

## Selected Validation Data



Various lysates were subjected to Tris-Acetate gel system followed by western blot with 30045-1-AP (COL12A1 antibody) at dilution of 1:800 incubated at room temperature for 1.5 hours. This data was developed using the same antibody clone with 30045-1-PBS in a different storage buffer formulation.



Immunofluorescent analysis of (-20°C Methanol) fixed U2OS cells using COL12A1 antibody (30045-1-AP) at dilution of 1:200 and Multi-rAb CoraLite® Plus 488-Goat Anti-Rabbit Recombinant Secondary Antibody (H+L) (RGAR002). This data was developed using the same antibody clone with 30045-1-PBS in a different storage buffer formulation.