

For Research Use Only

CD35 Polyclonal antibody

Catalog Number: 30057-1-AP



Basic Information

Catalog Number: 30057-1-AP	GenBank Accession Number: NM_000573	Purification Method: Antigen affinity purification
Size: 150ul , Concentration: 600 ug/ml by Nanodrop;	GeneID (NCBI): 1378	Recommended Dilutions: WB: 1:500-1:1000
Source: Rabbit	ENSEMBL Gene ID: ENSG00000203710	
Isotype: IgG	UNIPROT ID: P17927	
Immunogen Catalog Number: AG30243	Full Name: complement component (3b/4b) receptor 1 (Knops blood group)	
	Calculated MW: 224 kDa	
	Observed MW: 250 kDa	

Applications

Tested Applications: WB, ELISA	Positive Controls: WB : TF-1 cells,
Species Specificity: human	

Background Information

CD35, also known as complement receptor type 1 (CR1) or C3b/C4b receptor, is a single-chain glycoprotein consisting of 30 repeating homologous protein domains known as short consensus repeats (~60 amino acids each) followed by transmembrane and cytoplasmic domains (PMID: 8765013). CD35 is variably expressed by granulocytes, monocytes, B cells, some T cells, erythrocytes, follicular dendritic cells, Langerhans cells, and glomerular podocytes (PMID: 19004497). CD35 acts as a receptor for C3b and C4b and plays important roles in the regulation of the complement cascade and clearance of immune complexes. A soluble form of CD35 has been found in plasma (PMID: 3156931). It has been reported that soluble CD35 is produced by a proteolytic cleavage in the C-terminal region of CD35 transmembrane domain (PMID: 9405292).

Storage

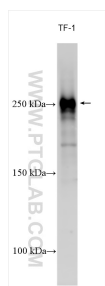
Storage:
Store at -20°C. Stable for one year after shipment.
Storage Buffer:
PBS with 0.02% sodium azide and 50% glycerol, pH7.3
Aliquoting is unnecessary for -20°C storage

*** 20ul sizes contain 0.1% BSA

For technical support and original validation data for this product please contact:
T: 1 (888) 4PTGLAB (1-888-478-4522) (toll free in USA), or 1(312) 455-8498 (outside USA)
E: proteintech@ptglab.com
W: ptglab.com

This product is exclusively available under Proteintech Group brand and is not available to purchase from any other manufacturer.

Selected Validation Data



Various lysates were subjected to SDS PAGE followed by western blot with 30057-1-AP (CD35 antibody) at dilution of 1:600 incubated at room temperature for 1.5 hours.