

For Research Use Only

# DNAH6 Polyclonal antibody

Catalog Number: 30073-1-AP



## Basic Information

|   |  |   |
|---|--|---|
| <b>Catalog Number:</b><br>30073-1-AP                          | <b>GenBank Accession Number:</b><br>BC104884         | <b>Purification Method:</b><br>Antigen affinity purification                        |
| <b>Size:</b><br>150ul , Concentration: 500 µg/ml by Nanodrop; | <b>GeneID (NCBI):</b><br>1768                        | <b>Recommended Dilutions:</b><br>WB 1:500-1:2000<br>IHC 1:50-1:500<br>IF 1:50-1:500 |
| <b>Source:</b><br>Rabbit                                      | <b>Full Name:</b><br>dynein, axonemal, heavy chain 6 |   |
| <b>Isotype:</b><br>IgG  | <b>Calculated MW:</b><br>475 kDa                     |   |
| <b>Immunogen Catalog Number:</b><br>AG32364                   | <b>Observed MW:</b><br>475 kDa                       |   |

## Applications

|  |  |
|--|--|
| <b>Tested Applications:</b><br>IF, IHC, WB, ELISA  | <b>Positive Controls:</b><br>WB : mouse testis tissue,<br>IHC : mouse testis tissue,<br>IF : hTERT-RPE1 cells, |
| <b>Species Specificity:</b><br>Human, mouse  |  |
| <b>Note-IHC: suggested antigen retrieval with TE buffer pH 9.0; (*) Alternatively, antigen retrieval may be performed with citrate buffer pH 6.0</b> |  |

## Background Information

DNAH6(Dynein heavy chain 6, axonemal) is also named as DNAHC6, DNHL1, HL2, KIAA1697 and belongs to the dynein heavy chain family. Dyneins are microtubule-associated motor protein complexes composed of several heavy, light, and intermediate chains(PMID:8812413). It is a force generating protein of respiratory cilia and produces force towards the minus ends of microtubules. This antibody is specific to DNAH6.

## Storage

**Storage:**  
Store at -20°C. Stable for one year after shipment.  
**Storage Buffer:**  
PBS with 0.02% sodium azide and 50% glycerol pH 7.3.  
Aliquoting is unnecessary for -20°C storage

\*\*\* 20ul sizes contain 0.1% BSA

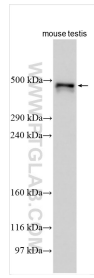
For technical support and original validation data for this product please contact:

T: 1 (888) 4PTGLAB (1-888-478-4522) (toll free in USA), or 1(312) 455-8498 (outside USA)

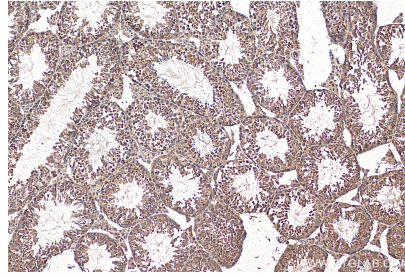
E: proteintech@ptglab.com  
W: ptglab.com

This product is exclusively available under Proteintech Group brand and is not available to purchase from any other manufacturer.

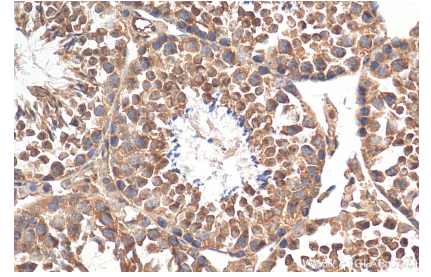
## Selected Validation Data



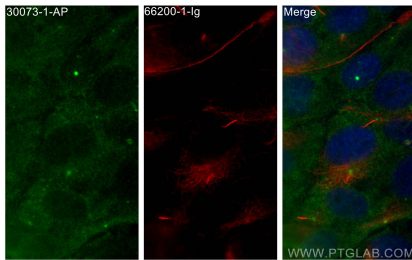
mouse testis tissue were subjected to SDS PAGE followed by western blot with 30073-1-AP (DNAH6 antibody) at dilution of 1:1000 incubated at room temperature for 1.5 hours.



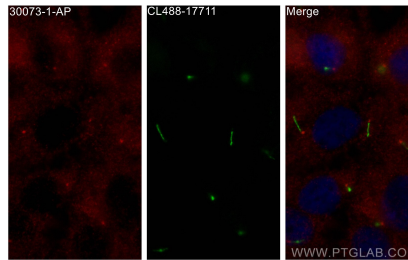
Immunohistochemical analysis of paraffin-embedded mouse testis tissue slide using 30073-1-AP (DNAH6 antibody) at dilution of 1:200 (under 10x lens). Heat mediated antigen retrieval with Tris-EDTA buffer (pH 9.0).



Immunohistochemical analysis of paraffin-embedded mouse testis tissue slide using 30073-1-AP (DNAH6 antibody) at dilution of 1:200 (under 40x lens). Heat mediated antigen retrieval with Tris-EDTA buffer (pH 9.0).



Immunofluorescent analysis of (4% PFA) fixed hTERT-RPE1 cells using DNAH6 antibody (30073-1-AP) at dilution of 1:200 and CoraLite®488-Conjugated AffiniPure Goat Anti-Rabbit IgG(H+L), acetylated Tubulin(Lys40) antibody (66200-1-Ig, Clone: 7E5H8, red).



Immunofluorescent analysis of (-20°C Methanol) fixed hTERT-RPE1 cells using DNAH6 antibody (30073-1-AP) at dilution of 1:200 and CoraLite®594-Conjugated AffiniPure Goat Anti-Rabbit IgG(H+L), CoraLite® Plus 488 ARL13B antibody (CL488-17711, green).