

For Research Use Only

PTRF Polyclonal antibody

Catalog Number: 30086-1-AP



Basic Information

Catalog Number: 30086-1-AP	GenBank Accession Number: BC008849	Purification Method: Antigen affinity purification
Size: 150ul , Concentration: 550 µg/ml by Nanodrop;	GeneID (NCBI): 284119	Recommended Dilutions: WB 1:2000-1:16000
Source: Rabbit	Full Name: polymerase I and transcript release factor	
Isotype: IgG	Calculated MW: 43 kDa	
Immunogen Catalog Number: AG32786	Observed MW: 55 kDa	

Applications

Tested Applications: WB, ELISA	Positive Controls: WB : A549 cells, HT-1080 cells, NIH/3T3 cells
Species Specificity: Human, mouse	

Background Information

Polymerase I and transcript release factor (PTRF) is an essential factor in the biogenesis of caveolae, which involve in numerous process, such as signal transduction and membrane and lipid trafficking. PTRF can terminate transcription of RNA Pol I, which involves pausing of transcription by TTF1, and dissociation of the transcription complex, release the complex from the template. The calculated molecular weight of PTRF is 43 kDa, but modified PTRF is about 50-55 kDa. (PMID: 11139612)

Storage

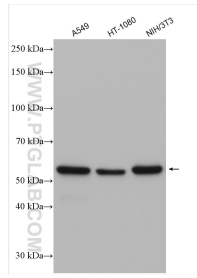
Storage:
Store at -20°C. Stable for one year after shipment.
Storage Buffer:
PBS with 0.02% sodium azide and 50% glycerol pH 7.3.
Aliquoting is unnecessary for -20°C storage

*** 20ul sizes contain 0.1% BSA

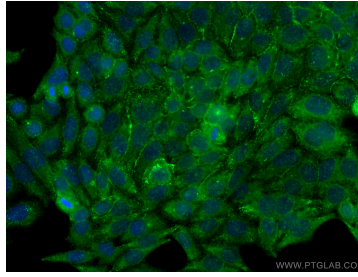
For technical support and original validation data for this product please contact:
T: 1 (888) 4PTGLAB (1-888-478-4522) (toll free in USA), or 1(312) 455-8498 (outside USA) E: proteintech@ptglab.com
W: ptglab.com

This product is exclusively available under Proteintech Group brand and is not available to purchase from any other manufacturer.

Selected Validation Data



Various lysates were subjected to SDS PAGE followed by western blot with 30086-1-AP (PTRF antibody) at dilution of 1:8000 incubated at room temperature for 1.5 hours.



Immunofluorescent analysis of (-20°C Methanol) fixed HepG2 cells using PTRF antibody (30086-1-AP) at dilution of 1:400 and CoraLite® 488-Conjugated AffiniPure Goat Anti-Rabbit IgG(H+L).