

MMP24 Polyclonal antibody

Catalog Number: 30102-1-AP

Basic Information

Catalog Number:

30102-1-AP

Size:

150ul , Concentration: 450 ug/ml by Nanodrop;

Source:

Rabbit

Isotype:

IgG

Immunogen Catalog Number:

AG31597

GenBank Accession Number:

NM_006690

GeneID (NCBI):

10893

UNIPROT ID:

Q9Y5R2

Full Name:

matrix metalloproteinase 24 (membrane-inserted)

Calculated MW:

73KD

Observed MW:

55-58 kDa

Purification Method:

Antigen affinity purification

Recommended Dilutions:

WB 1:500-1:2000

Applications

Tested Applications:

WB, ELISA

Species Specificity:

Human, mouse, rat

Positive Controls:

WB : mouse brain tissue, rat brain tissue

Background Information

Proteins of the matrix metalloproteinase (MMP) family are involved in the breakdown of extracellular matrix in normal physiological processes, such as embryonic development, reproduction, tissue remodeling, and disease processes, such as arthritis or metastasis. Most MMP's are secreted as inactive proproteins which are activated when cleaved by extracellular proteinases. MMP24 (MT5-MMP) is a membrane type matrix metalloproteinase attached to the cell membrane by a transmembrane domain (PMID: 30654475). MMP24 is mainly expressed in the nervous system, hippocampus, and cerebellum (PMID: 10727639,35177031). MMP24 may negatively regulate the aggressiveness of cancer cells under the stiff ECM environment during tumor progression (PMID: 32093160). MMP24 can be detected as 62-65 kDa and 55-58 kDa (PMID: 16495457,20942921,10622708).

Storage

Storage:

Store at -20°C. Stable for one year after shipment.

Storage Buffer:

PBS with 0.02% sodium azide and 50% glycerol pH 7.3.

Aliquoting is unnecessary for -20°C storage

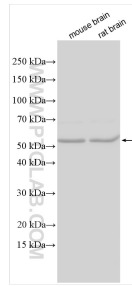
***** 20ul sizes contain 0.1% BSA**

For technical support and original validation data for this product please contact:

T: 1 (888) 4PTGLAB (1-888-478-4522) (toll free in USA), or 1(312) 455-8498 (outside USA)

E: proteintech@ptglab.com
W: ptglab.com**This product is exclusively available under Proteintech Group brand and is not available to purchase from any other manufacturer.**

Selected Validation Data



Various lysates were subjected to SDS PAGE followed by western blot with 30102-1-AP (MMP24 antibody) at dilution of 1:1000 incubated at room temperature for 1.5 hours.