

For Research Use Only

GPR151 Polyclonal antibody

Catalog Number: 30104-1-AP



Basic Information

Catalog Number: 30104-1-AP	GenBank Accession Number: NM_194251	Purification Method: Antigen affinity purification
Size: 150ul , Concentration: 400 µg/ml by Nanodrop;	GeneID (NCBI): 134391	Recommended Dilutions: WB 1:500-1:1000
Source: Rabbit	Full Name: G protein-coupled receptor 151	
Isotype: IgG	Calculated MW: 47kd	
Immunogen Catalog Number: AG32442	Observed MW: 46 kDa	

Applications

Tested Applications: WB, ELISA	Positive Controls: WB : HeLa cells, K-562 cells
Species Specificity: Human	

Background Information

G protein-coupled receptors (GPCRs) are a superfamily of cell-surface receptors which are important for intracellular signal transduction. GPR151 (G protein-coupled receptor 151) is highly enriched in the medial and lateral habenula and is expressed at presynaptic membranes and synaptic vesicles (PMID: 32098843). GPR151 has been reported to play an important role in modulating neuropathic pain and controlling nicotine addiction vulnerability (PMID: 32098843,34244727,30373770).

Storage

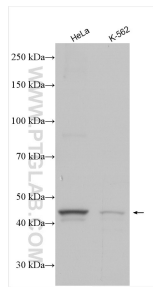
Storage:
Store at -20°C. Stable for one year after shipment.
Storage Buffer:
PBS with 0.02% sodium azide and 50% glycerol pH 7.3.
Aliquoting is unnecessary for -20°C storage

*** 20ul sizes contain 0.1% BSA

For technical support and original validation data for this product please contact:
T: 1 (888) 4PTGLAB (1-888-478-4522) (toll free in USA), or 1(312) 455-8498 (outside USA) E: proteintech@ptglab.com
W: ptglab.com

This product is exclusively available under Proteintech Group brand and is not available to purchase from any other manufacturer.

Selected Validation Data



Various lysates were subjected to SDS PAGE followed by western blot with 30104-1-AP (GPR151 antibody) at dilution of 1:600 incubated at room temperature for 1.5 hours.