

For Research Use Only

# GPR151 Polyclonal antibody, PBS Only

Catalog Number:30104-1-PBS



## Basic Information

<b>Catalog Number:</b> 30104-1-PBS	<b>GenBank Accession Number:</b> NM_194251	<b>Purification Method:</b> Antigen affinity purification
<b>Size:</b> 100ug , Concentration: 1 mg/ml by Nanodrop;	<b>GeneID (NCBI):</b> 134391	
<b>Source:</b> Rabbit	<b>UNIPROT ID:</b> Q8TDV0	
<b>Isotype:</b> IgG	<b>Full Name:</b> G protein-coupled receptor 151	
<b>Immunogen Catalog Number:</b> AG32442	<b>Calculated MW:</b> 47kd	
	<b>Observed MW:</b> 46 kDa	

## Applications

**Tested Applications:**  
WB, IHC, Indirect ELISA

**Species Specificity:**  
human

## Background Information

G protein-coupled receptors (GPCRs) are a superfamily of cell-surface receptors which are important for intracellular signal transduction. GPR151 (G protein-coupled receptor 151) is highly enriched in the the medial and lateral habenula and is expressed at presynaptic membranes and synaptic vesicles (PMID: 32098843). GPR151 has been reported to play an important role in modulating neuropathic pain and controlling nicotine addiction vulnerability (PMID: 32098843,34244727,30373770).

## Storage

**Storage:**  
Store at -80°C.

**Storage Buffer:**  
PBS only, pH7.3

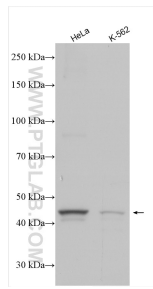
For technical support and original validation data for this product please contact:

T: 1 (888) 4PTGLAB (1-888-478-4522) (toll free  
in USA), or 1(312) 455-8498 (outside USA)

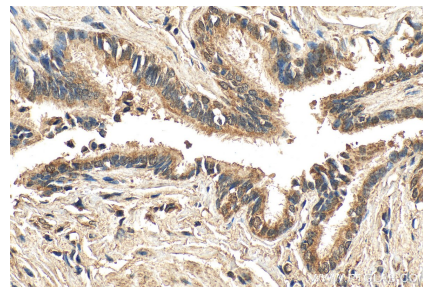
E: [proteintech@ptglab.com](mailto:proteintech@ptglab.com)  
W: [ptglab.com](http://ptglab.com)

**This product is exclusively available under Proteintech Group brand and is not available to purchase from any other manufacturer.**

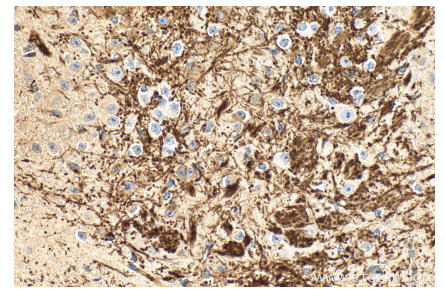
## Selected Validation Data



Various lysates were subjected to SDS PAGE followed by western blot with 30104-1-AP (GPR151 antibody) at dilution of 1:600 incubated at room temperature for 1.5 hours. This data was developed using the same antibody clone with 30104-1-PBS in a different storage buffer formulation.



Immunohistochemical analysis of paraffin-embedded human lung tissue slide using 30104-1-AP (GPR151 antibody) at dilution of 1:200 (under 40x lens). This data was developed using the same antibody clone with 30104-1-PBS in a different storage buffer formulation.



Immunohistochemical analysis of paraffin-embedded mouse brain tissue slide using 30104-1-AP (GPR151 antibody) at dilution of 1:200 (under 40x lens). Heat mediated antigen retrieval with Tris-EDTA buffer(pH9). This data was developed using the same antibody clone with 30104-1-PBS in a different storage buffer formulation.